



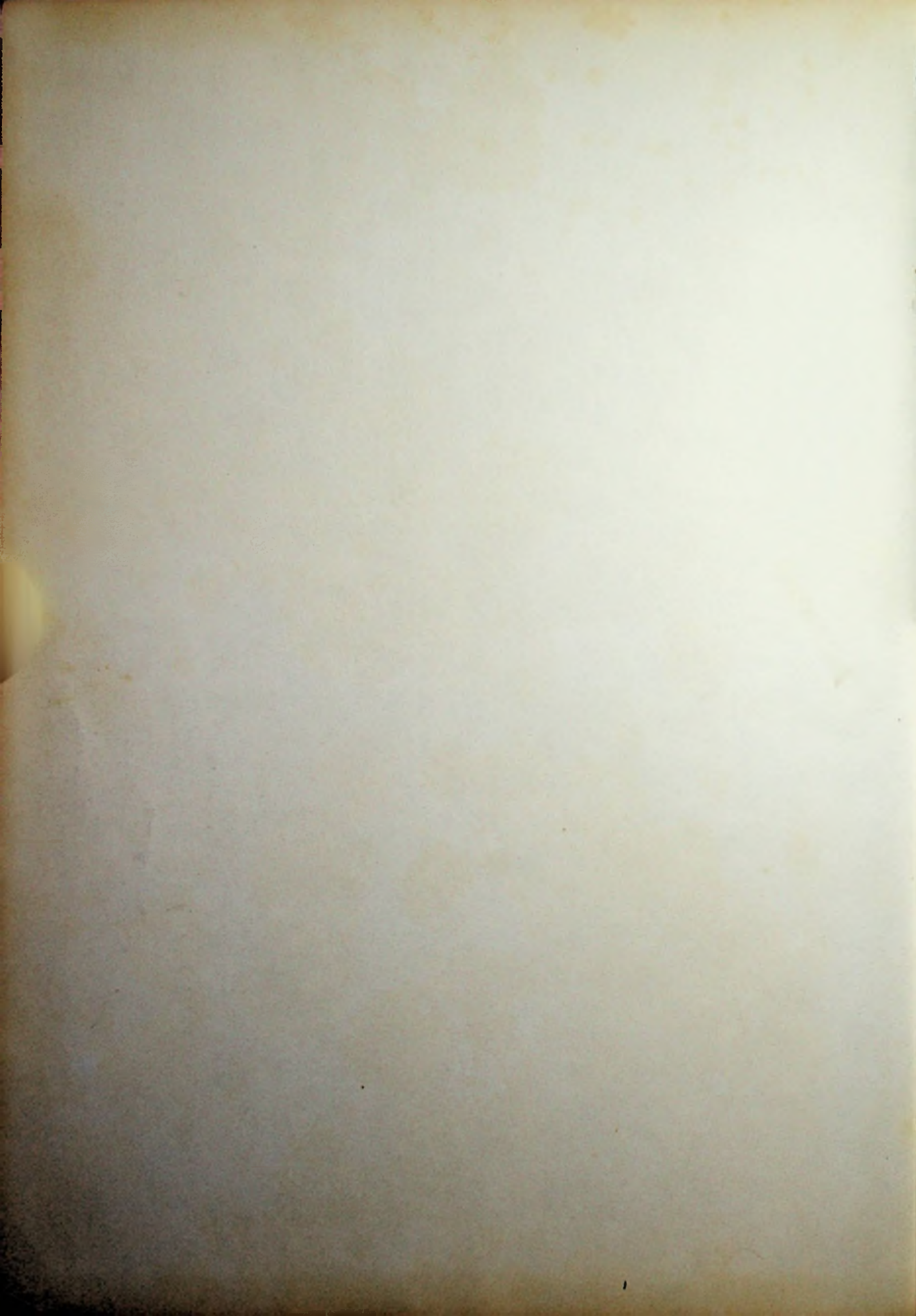
1060

TIGER SILHOUETTE

1000







The Tiger Silhouette

1968

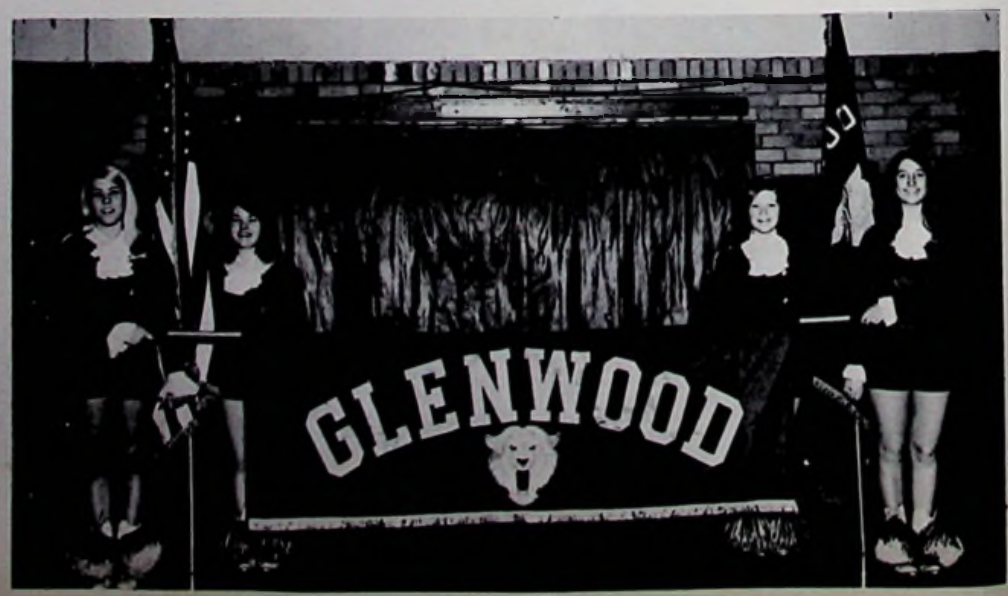
Glenwood
High School

New Boston, Ohio



Contents

Faculty..... 7
Seniors..... 9
Underclassmen..... 29
Classes..... 51
Favorites..... 58
Organizations..... 65
Sports..... 78
Advertisements..... 92





Snaps



Board of Education



Left to right: Wendall Wohler, Wetzel Moore, Carl Clark, President, F. M. Jackson, Paul Ruark.

Clerk of School

P. E. HEMPILL





Principal James N. Warren



Superintendent

*Raymond E.
Hall*



SECRETARY
Jean Riffe



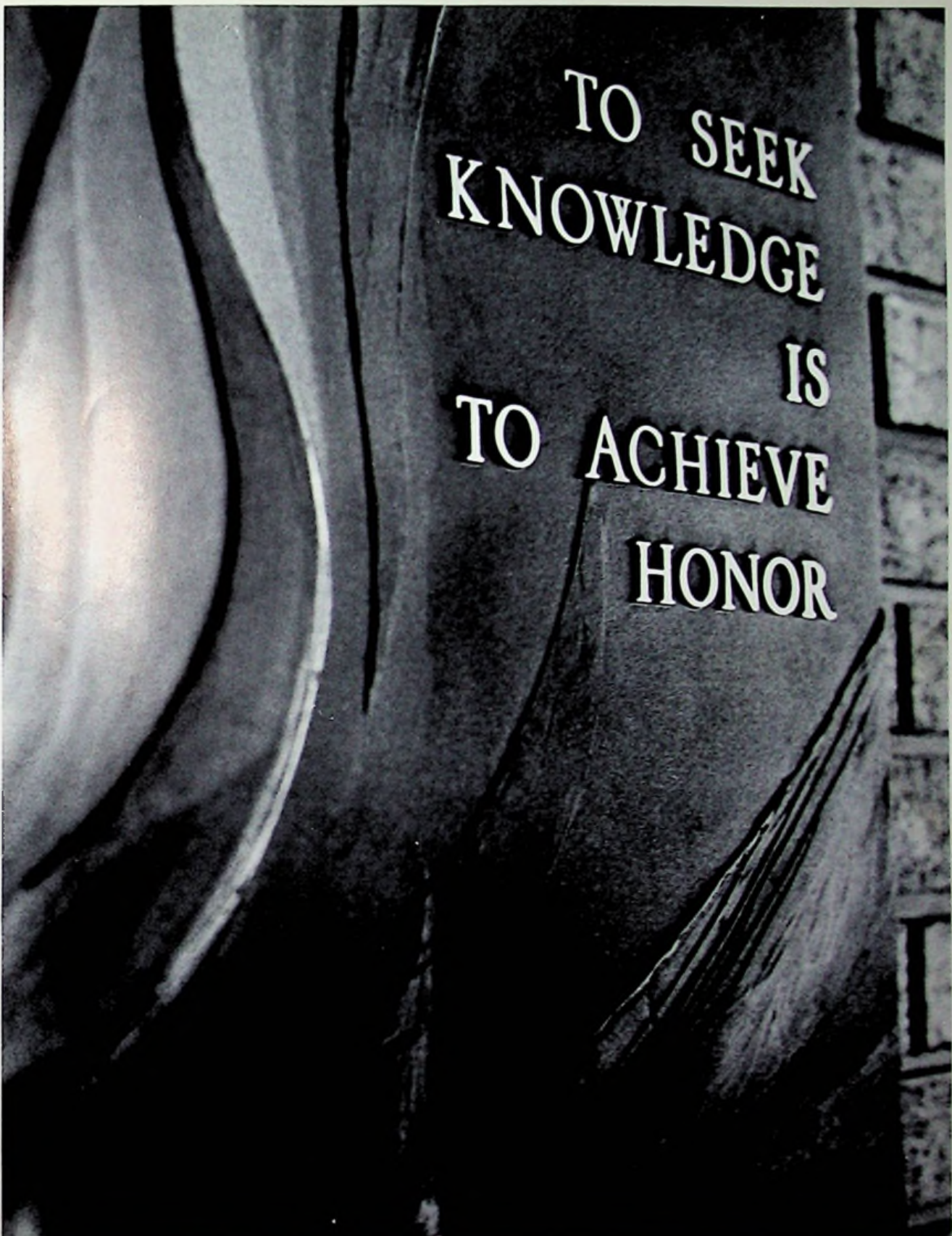
SECRETARY
Suzanne Cooper



SCHOOL NURSES
Wilma Warren Georgianna Mershon



ATTENDANCE OFFICER
Bernard Booten

A black and white photograph of a book cover. The cover is dark with a textured, possibly leather or cloth, surface. On the right side, there are faint, rectangular outlines that suggest a spine or a series of pages. The text is printed in a bold, white, serif font, arranged in four lines. The first line is "TO SEEK", the second is "KNOWLEDGE", the third is "IS", and the fourth is "TO ACHIEVE HONOR". The lighting is dramatic, with a bright highlight on the left side of the cover, creating a strong contrast with the dark background.

TO SEEK
KNOWLEDGE
IS
TO ACHIEVE
HONOR

FACULTY



Mr. Bond
Mrs. Clerico
Mr. Clerico
Miss Curry
Mr. Darling



Mr. Daum
Mr. Dautel
Mr. Grabham
Mr. Groh



Mr. Hunt
Mr. Jenkins
Miss Joseph

The Faculty

Mr. Lucas



Mr. Newberry
Mrs. Parrish

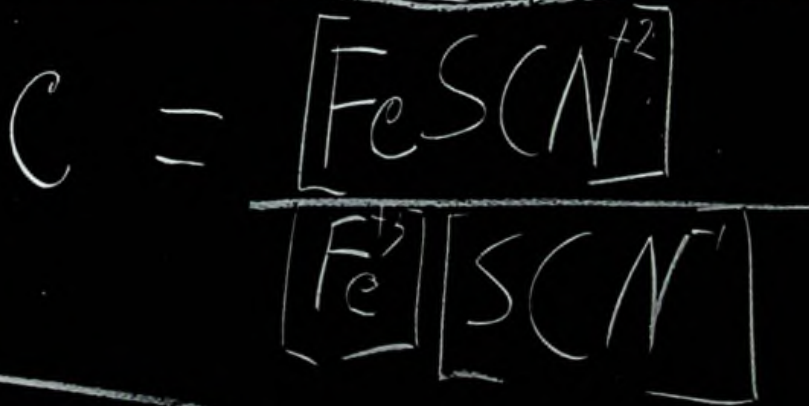
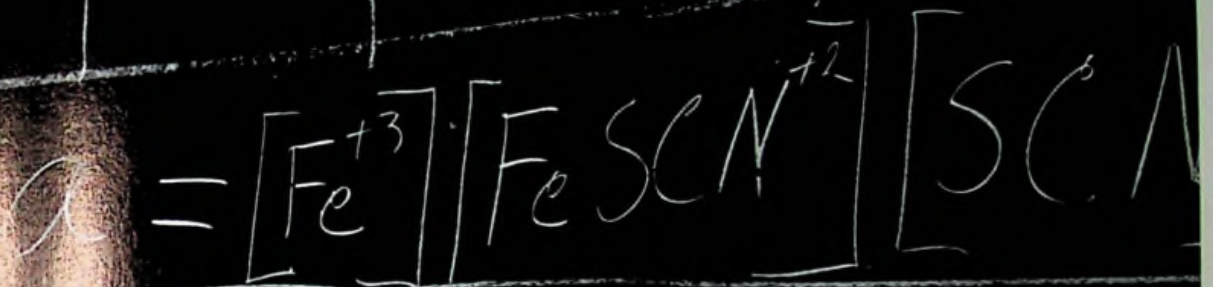


Mr. Pellegrinon
Mr. Rowland
Mrs. Schisler



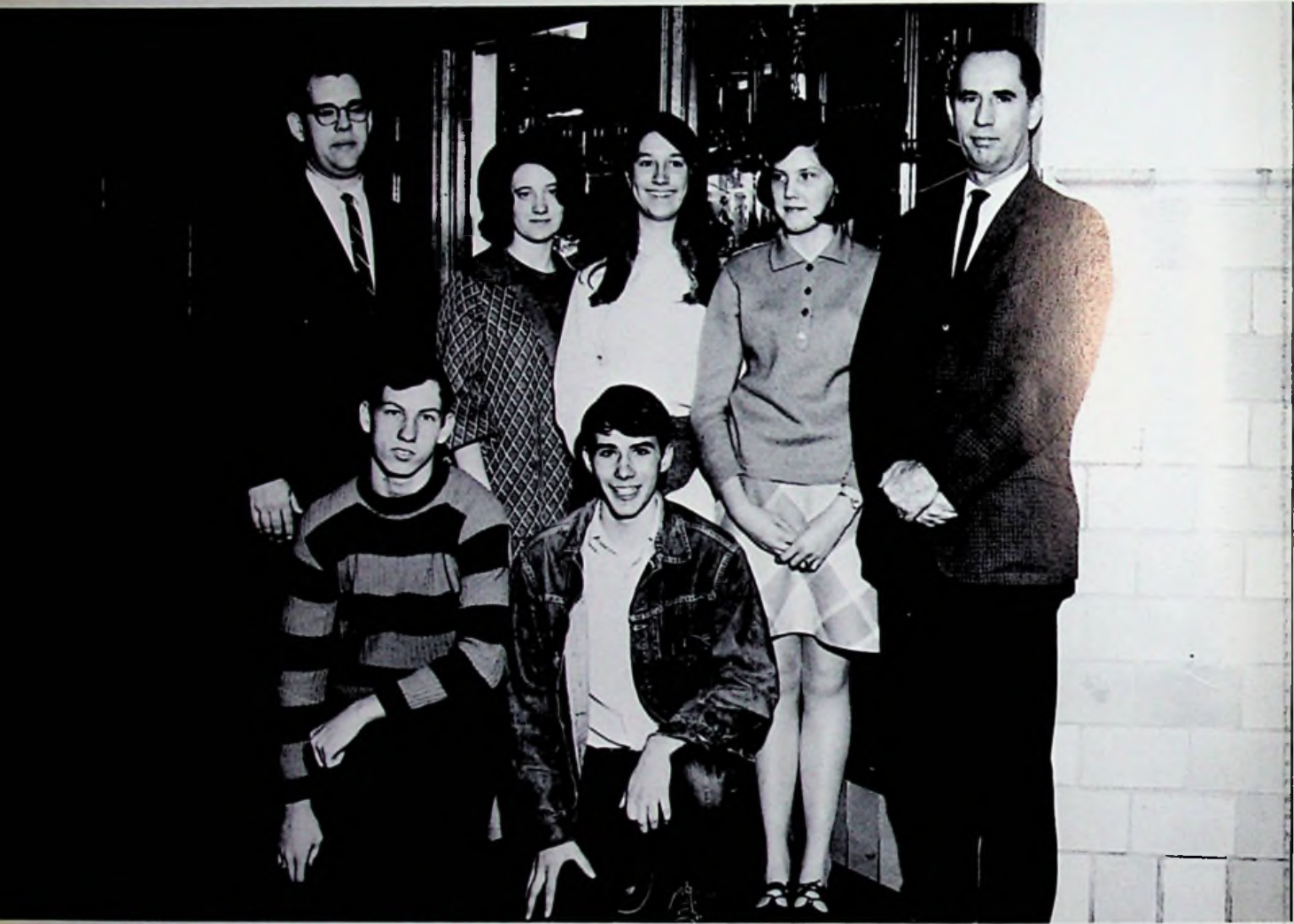
Mr. Simpson
Mr. Stroth
Mr. Washington
Mrs. Wellman





SENIORS

Senior Class Officers



The Class of "68"

SECRETARY

Diane Justice

VICE-PRESIDENT

Mike Glenn

SPONSORS

Mr. Dautel
Mr. Newberry

PRESIDENT

Don Adkins

TREASURER

Susan Newberry

REPORTER

Carol Fannin

Class of 1968

History

CLASS MOTTO

"Forward ever, Backward never."

CLASS COLORS and FLOWER

Brown and Gold Yellow Rose

Gee, it seems only yesterday was September 3, 1964, that 69 frightened but fun-loving freshmen stampeded through the halls of Glenwood. The four years that seemed to be such a long stretch is now only a short jump to the finish line. We held our first big election and chose the leader of the pack, Connie Haney, President; Vice-President, Rose Cottle; Secretary, Bonnie Lodwick; Treasurer, Susan Newberry; and Reporter, Sharon Adkins. Then we chose that happy-go-lucky Donna Maynard as our Homecoming attendant. We were advised by Mr. Newberry and Mr. Wheeler.

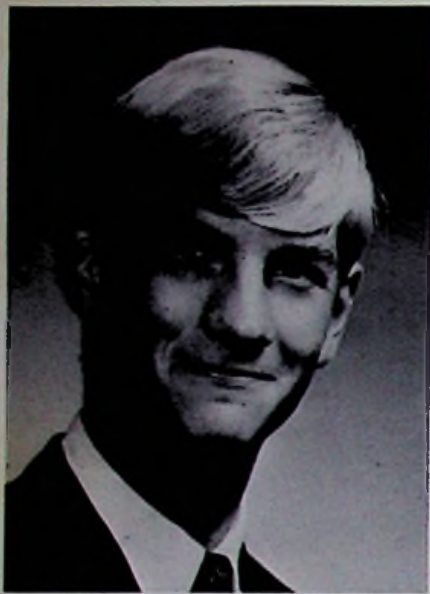
Dreading to see the summer vacation end, 59 swinging sophomores danced through ol' Glenwood's corridors to get another year behind them and to add a few extras' to Mr. Warren's gray hair. This year we filled our offices with President, Susan Newberry; Vice-President, Leonard Perkins; Secretary, Bonnie Lodwick; Treasurer, Donna Maynard; and Reporter, Patty Hale. Pretty Nikki Fraley represented us as Homecoming attendant. We might add we were still stuck or rather advised by Mr. Newberry and Mr. Wheeler. The exciting moment came, May 5, 1966, when we ordered our precious classrings. We felt that boy, none could compare with these and that we'd never part with them.

Summer vacation seemed to just zoom by. Stepping across the threshold this time was different - for we were 58 jovial juniors walking proud, for this year we really had a lot to look forward to. To start the ball rolling we had to put another bunch of nuts in office. This time we gave the honors to Donna Maynard, President; Vice-President, Kathy Lewis; Secretary, Bonnie Lodwick; Treasurer, Susan Newberry; and Sharon Adkins, Reporter. In October our classrings arrived and we strolled the halls with biggest heads ever, for we were the most envied by the lower classmen. In a few days the excitement died down and the priceless classrings we swore that we'd never part with somehow ended up in the possession of our steadies. Homecoming rolled around and the graceful Rose Cottle was the Attendant. On November 18 we presented our Junior Class Play, "Little Beast" and "Delinquent Adults" directed by Genevieve Campbell. Remembering it was practice, practice, practice we thought we'd never pull through. We did, though and, putting all modesty aside, it was a success! Then in early spring we began to plan the highlights of the year; our Junior Prom, the theme was, "Moonlight and Roses." Again putting all conceit aside, we gave the best prom ever. Credit of our success belongs to the whole class whose joint effort it was attributed to. This year really flew by fast but maybe it's a blessing for Coach just couldn't stand losing much more hair.

In the early fall when 50 groovy but somewhat sentimental seniors walked up the stairs, we thought, well this is it! Let's make the best out of this last year. First, we placed in office responsible students like President, Don Adkins; Vice-President, Mike Glenn; Secretary, Diana Justice; Treasurer, Susan Newberry; and Reporter, Carol Fannin. Then we elected Bonnie Lodwick as our Homecoming attendant and the sweet Nikki Fraley as our Homecoming Queen. Patty Hale and Bob Morrow were the Annual Kyngand Queen. Spring rolled around before we knew it, and following in its footsteps was the Senior Class Play, "We Shook the Family Tree" directed by Mrs. Cleo Wellman. The most memorable part in our senior year was our senior trip to Norfolk, Va. and Gettysburg. Along with Mr. Jenkins and Mr. Darling 36 seniors spent four fun-filled days of enjoyment. Soon a beautiful prom "Tahitian Twilight" was given in our honor on May 25, 1968. Our Baccalaureate was held on Sunday, June 2, 1968 and Commencement was held on Tuesday, June 4, with June H. Shada as our speaker. Brenda Curnutte holds the honor as valedictorian and Chuck Clevenger as salutatorian. We have participated in our last activity at G.H.S. Our dream that was once a reality is now only a memory.

ANDREW WARREN ADKINS
College Preparatory

Football 1, 2, 3, 4; Hon. Men. All
S.O.C. 4; Tri-Captain 4; Track 3;
B.A.A. 1, 2, 3, 4; Science Fair 1, 2, 3, 4;
Art Exhibit 4; Class Play 4; French Club
1, 2; Scholarship Team 1, 2, 3.



DONOVAN LEE ADKINS
College Preparatory

French Club 1, 2; Class Play 3; Football
4; Track 3; B.A.A. 1, 2, 3; Class Officer
4; Art Exhibit 2, 3, 4; County Fair Exhibit
3; Science Fair 1, 2, 3, 4; Scholarship
Team 3; Perfect Attendance 1, 2, 3, 4.



TERRY BEAR
Industrial Arts

Science Fair 1, 2; Industrial Arts Exhibit
1, 2, 3, 4; Track 3; Art Exhibit 3, 4;
B.A.A. 1, 2, 3, 4.

WILLIAM JACOB BUSH
General

Band 2, 3, 4; Pep Band 3, 4; Science Fair
1, 2; Art Exhibit.



ROBERT KEITH CASEMAN
General

Basketball 2, 4; Industrial Arts Exhibit 1,
2, 3, 4; B.A.A. 1, 2.

CHARLES RAYMOND CLEVINGER
College Preparatory

Chess Club 1, 2; B. A. A. 1, 2, 3, 4; National Honor Society 3, 4; Officer 4; Boy's State 3; Track 3; Football 4; Debate Team 1, 2; Schol. Team 1, 2, 3, 4; Yearbook Staff 3, 4; Band 2, 3; Science Fair 1, 2, 3, 4; Art Exhibit 1, 2, 3, 4; Class Play 3, 4; Voice of Democracy Runner-up 4; Senior Top Ten.

DAMON BLAINE CORNWELL
General

Science Fair 1, 2, 3, 4; Library Staff 2; French Club 1, 2; Annual King Candidate 1; Basketball 1, 2; B. A. A. 3, 4; Class Play 4; Times Reporter 2, 3.



BRENDA JOYCE CURNUTTE
College Preparatory

Band 1, 2, 3, 4; Pep Club 1, 2, 3, 4; Girl's State 3; Rensselaer Award 3; Scholarship Team 1, 2, 3, 4; National Honor Society 3, 4; Officer 4; Library Staff 3, 4; Chess Club 1, 2; Class Play 3, 4; Science Fair 1, 2, 4; Senior Top Ten.

STEVEN EDWARD DIALS
General

Football 1, 2, 3, 4; Chess Club 1; Baseball 1, 2, 4; Track 3; French Club 3; Science Fair 1, 2; Art Exhibit 3, 4; County Fair Exhibit 3, 4; B. A. A. 1, 2, 3, 4.



THOMAS CHARLES DODDS
General

French Club 1, 2; Basketball 1, 2, 3, 4; Football 2; Science Fair 1, 2; Library Staff 2.





PATRICIA DIANNE ELDRIDGE

General

Pep Club 1, 2; G. A. A. 1, 2; Science Fair 1, 2, 4; F. H. A. 3, 4; Dorcas Club 1, 2; Glee Club 1, 2.



CAROLE ANN FITCH

College Preparatory

Library Staff 1; Pep Club 1, 2; Majorette 2, 3, 4; Head 4; Sextette 1, 2, 3, 4; Glee Club 1, 2, 3, 4; Science Fair 1, 2, 3, 4; Class Play 3, 4; Band 1, 2, 3, 4.



WILLIAM EUGENE FANNIN

Industrial Arts

Industrial Arts Exhibit 1, 2, 3, 4.



CAROL LYNN FANNIN

Stenographic

Band 1, 2, 3; Pep Club 1, 2; G. A. A. 1, 2; Science Fair 1, 2, 4; Scholarship Team 2; Class Play Crew 3, 4; Business Club 2, 3, 4; Officer 4; National Honor Society 3; F. H. A. 3, 4; Library Staff 4; Newspaper Staff 4; Class Officer.



ANTHONY GENE FLENTGE

General

NIKKI LEE FRALEY
Stenographic

Dorcas Club 1, 2; Business Club 3, 4; Pep Club 1, 2; G.A.A. 1, 2; Newspaper Staff 4; Ad Solicitor 4; Class Play Crew 3; Class Play 4; Varsity Cheerleader 3, 4; Homecoming Attendant 2; Homecoming Queen 4.



CHARLES MICHAEL GLENN
Industrial Arts

Football 2, 3, 4; All S.O.C. 4; M.V.P. 4; Tri-Captain 4; B.A.A. 3; Track 3, 4; Basketball 2, 4; Baseball 2, 4; Art Exhibit 3, 4; County Fair Exhibit 3; Ind. Art Exhibit 2, 3, 4; Science Fair 2, 3.

PATRICIA ANNE HALE
College Preparatory

Glee Club 1, 2, 3, 4; Sextette 2, 3, 4; Varsity Cheerleader 3, 4; Yearbook Staff 4; Class Play 3, 4; Science Fair 1, 2, 3, 4; Scholarship Team 1, 2, 3, 4; National Honor Society 3, 4; President 4; Annual Queen 4; Chess Club 1; Pep Club 1, 2; Handbook Committee 2; Office Staff 1; G.A.A. 1, 2; Senior Top Ten.



CONNIE ANN HANEY
College Preparatory

National Honor Society 3, 4; Varsity Cheerleader 1, 2, 3, 4; Captain 4; Scholarship Team 1, 2; Class Play 3, 4; Science Fair 1, 2, 3; Sextette 1, 2, 3, 4; Glee Club 1, 2, 3, 4; Library Staff 3; Officer 3; Office Staff 4; Yearbook Staff 3, 4; Asst. Editor 3; Editor 4; Ad Solicitor 3, 4; Class Officer 1; G.A.A. 1, 2; Senior Top Ten.

PHYLLIS ANN HARPER
College Preparatory

Glee Club 2, 3, 4; Band 3, 4; Science Fair 3, 4; Class Play Crew 4.



'68



PATRICIA DIANNE ELDRIDGE

General

Pep Club 1, 2; G.A.A. 1, 2; Science Fair 1, 2, 4; F.H.A. 3, 4; Dorcas Club 1, 2; Glee Club 1, 2.



CAROLE ANN FITCH

College Preparatory

Library Staff 1; Pep Club 1, 2; Majorette 2, 3, 4; Head 4; Sextette 1, 2, 3, 4; Glee Club 1, 2, 3, 4; Science Fair 1, 2, 3, 4; Class Play 3, 4; Band 1, 2, 3, 4.



WILLIAM EUGENE FANNIN

Industrial Arts

Industrial Arts Exhibit 1, 2, 3, 4.



CAROL LYNN FANNIN

Stenographic

Band 1, 2, 3; Pep Club 1, 2; G.A.A. 1, 2; Science Fair 1, 2, 4; Scholarship Team 2; Class Play Crew 3, 4; Business Club 2, 3, 4; Officer 4; National Honor Society 3; F.H.A. 3, 4; Library Staff 4; Newspaper Staff 4; Class Officer.



ANTHONY GENE FLENTGE

General

NIKKI LEE FRALEY
Stenographic

Dorcas Club 1, 2; Business Club 3, 4; Pep Club 1, 2; G. A. A. 1, 2; Newspaper Staff 4; Ad Solicitor 4; Class Play Crew 3; Class Play 4; Varsity Cheerleader 3, 4; Homecoming Attendant 2; Homecoming Queen 4.

CHARLES MICHAEL GLENN
Industrial Arts

Football 2, 3, 4; All S. O. C. 4; M. V. P. 4; Tri-Captain 4; B. A. A. 3; Track 3, 4; Basketball 2, 4; Baseball 2, 4; Art Exhibit 3, 4; County Fair Exhibit 3; Ind. Art Exhibit 2, 3, 4; Science Fair 2, 3.

PATRICIA ANNE HALE
College Preparatory

Glee Club 1, 2, 3, 4; Sextette 2, 3, 4; Varsity Cheerleader 3, 4; Yearbook Staff 4; Class Play 3, 4; Science Fair 1, 2, 3, 4; Scholarship Team 1, 2, 3, 4; National Honor Society 3, 4; President 4; Annual Queen 4; Chess Club 1; Pep Club 1, 2; Handbook Committee 2; Office Staff 1; G. A. A. 1, 2; Senior Top Ten.

CONNIE ANN HANEY
College Preparatory

National Honor Society 3, 4; Varsity Cheerleader 1, 2, 3, 4; Captain 4; Scholarship Team 1, 2; Class Play 3, 4; Science Fair 1, 2, 3; Sextette 1, 2, 3, 4; Glee Club 1, 2, 3, 4; Library Staff 3; Officer 3; Office Staff 4; Yearbook Staff 3, 4; Asst. Editor 3; Editor 4; Ad Solicitor 3, 4; Class Officer 1; G. A. A. 1, 2; Senior Top Ten.

PHYLLIS ANN HARPER
College Preparatory

Glee Club 2, 3, 4; Band 3, 4; Science Fair 3, 4; Class Play Crew 4.





HAROLD EDWARD HOWELL
General



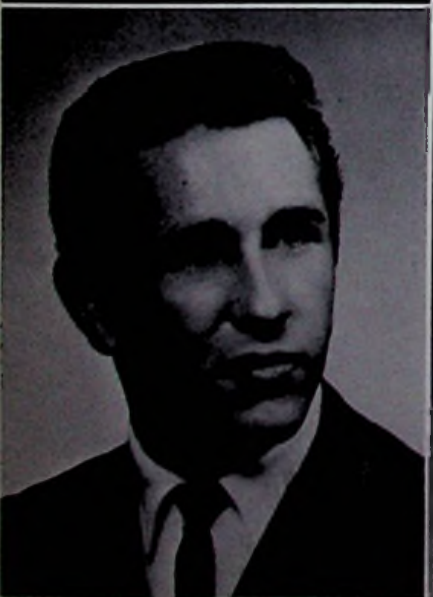
DIANA LEE JUSTICE
Stenographic

Glee Club 1; Dorcas Club 1, 2; Scholarship Team 2; Class Play Crew 3, 4; Student Director 3; Business Club 3, 4; Officer 4; Newspaper Staff 4; F. H. A. 3, 4; Officer 3, 4; Class Officer 4; Band Announcer 4; Science Fair 4; Office Staff 4.



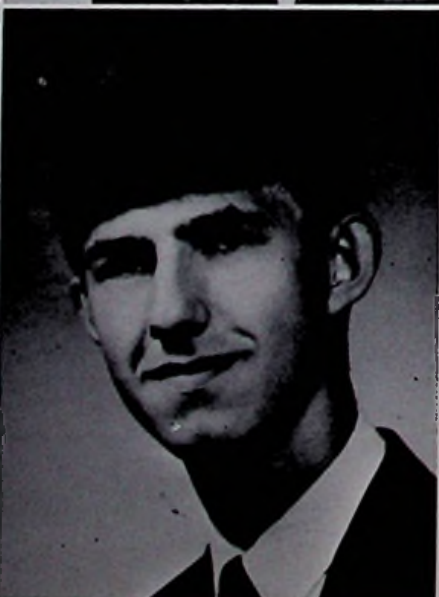
DONALD LEE JUSTICE
Industrial Arts

Ind. Art Exhibit 1, 2, 3, 4; Science Fair 1, 2.



RONALD RAY JUSTICE
Industrial Arts

Ind. Art Exhibit 1, 2, 3, 4; Science Fair 1.



MICHAEL ANTHONY KEENEY
Industrial Arts

Class Play Crew 3, 4; Ind. Art Exhibit 1, 2, 3, 4; Science Fair 1, 2; Art Exhibit 2, 3, 4; B. A. A. 3.

DANNY HERBERT LEADINGHAM
College Preparatory

Football 1, 2; Basketball 1; French Club
1, 2; Class Play 3; Science Fair 1, 2, 3;
Ad Solicitor 4; Art Exhibit 2, 3, 4.

TERRY LEONARD
Industrial Arts

Ind. Art Exhibit 1, 2, 3, 4; Science Fair
1.



KATHY LOUISE LEWIS
College Preparatory

National Honor Society 3, 4; Officer 4;
Varsity Cheerleader 3, 4; Class Play 3;
Class Play Crew 4; Chess Club 1; Pep
Club 1, 2; Scholarship Team 2, 3; Sci-
ence Fair 1, 2, 3, 4; Library Staff 1, 2, 3;
Class Officer 3; Ad Solicitor 4; Annual
Queen Candidate 1; Art Exhibit 2, 3, 4;
County Fair Exhibit 3, 4; G. A. A. 1, 2;
Senior Top Ten.

DONNA SUE LITTLETON
Stenographic

F. H. A. 3, 4; Officer 4; Business Club 4;
Newspaper Staff 4; Class Play Crew 3.



BONNIE MICHELE LODWICK
College Preparatory

Science Fair 1, 2, 3, 4; Library Staff 1, 2,
3, 4; Officer 4; Sextette 1, 2, 3, 4; Pep
Band 1, 2, 3, 4; Pep Club 1, 2, 3, 4; Art
Exhibit 2, 3, 4; Glee Club 1, 2, 3, 4; Ad
Solicitor 3, 4; Class Play 3, 4; Queen
Attendant 4; Band 1, 2, 3, 4; Class Of-
ficer 2, 3; Handbook Committee 2.





JAMES GREGORY LODWICK
General

B.A.A. 1, 2, 3; Class Play Crew 3, 4;
Art Exhibit 2, 3, 4; Scholarship Team 3;
French Club 1, 2; Science Fair 1, 2;
Chess Club 1; Industrial Arts Exhibit 2,
3, 4.



BONNIE SUE MATHIS
General

Band 1; Sextette 1; Dorcus Club 1; Class
Play Crew 3; Science Fair 1, 2, 4.



DONNA SUE MAYNARD
College Preparatory

Band 1, 2, 3, 4; Majorette 2, 3, 4; Science
Fair 1, 2, 3, 4; Art Exhibit 2, 3, 4; Class
Play 3, 4; Queen Attendant 1; Class Of-
ficer 2, 3; Office Staff 4; Glee Club 1, 2,
3, 4; Sextette 1, 2, 3, 4; Ad Solicitor 3;
National Honor Society 3, 4; Scholarship
Team 1, 2; Handbook Committee 2;
Senior Top Ten.

ROBERT EUGENE MORROW
General

Annual King 4; World Affair Inst. 4;
National Honor Society 4; Art Ex. 3, 4;
Science Fair 1, 2, 3; Basketball 1, 2, 3, 4;
Top S.O.C. Scorer 4; All S.O.C. 4;
Captain 4; Football 4; Hon. Men. All
S.O.C. 4; 2nd Team All District 4;
Baseball 1, 2, 3, 4; Senior Top Ten.

SUSAN IRENE NEWBERRY
College Preparatory

Sextette 1, 2, 3, 4; National Honor Societ
3, 4; Officer 4; Class Play 3, 4; Class
Officer 1, 2, 3, 4; Glee Club 2, 3, 4; Schol
arship Team 1, 2, 3, 4; Band 1, 2, 3, 4; Pep
Club 1, 2, 3, 4; Cabinet 3; Ad Solicitor 4;
Science Fair 1, 2, 4; Flagbearer 2, 3, 4;
Debate Team 2; Handbook Committee 2;
Art Exhibit 1, 2, 3, 4; County Fair Exhibit
3, 4; Senior Top Ten.



STEPHEN LEWIS PATTON
College Preparatory

Football 4; French Club 1, 2; Class Play 3; Art Exhibit 1; Science Fair 1, 2, 3; Ad Solicitor 4.

LEONARD PERKINS
College Preparatory

Basketball 2; Baseball 3; Football 4; Band 1, 2, 3; Chess Club 1; Class Play 3, 4; Class Officer 2; Handbook Committee 2; Pep Band 2, 3; B.A.A. 1, 3, 4; Science Fair 1, 2, 3, 4.



LARRY DELL PURDY
Industrial Arts

Track 3; Football 2, 3; B.A.A. 1, 2, 3, 4; Science Fair 1, 2; Class Play Crew 3, 4; Ind. Arts Exhibit 1, 2, 3, 4.

TERRY LEE ROSS
General

Football 2, 3, 4; Baseball 2, 3, 4; Football All S.O.C. Hon. Men. 4; Ind. Arts Exhibit 2; Class Play 4; B.A.A. 2, 3, 4; Class Play Crew 3; Science Fair 2, 3, 4. Science Fair 2, 3, 4.



RANDY RICHARD SIZEMORE
General

Football 1, 2, 3, 4; Tri-Captain 4; Baseball 1, 2, 3, 4; Basketball 1, 2, 3; B.A.A. 4; Science Fair 1; Art Exhibit 3, 4; Ind. Arts Exhibit 2, 3.



'68



STEPHEN WAYNE SKEENS
General

Football 4; Titan Award 4; Track 3;
Class Play Crew 3; Baseball Manager 4;
B.A.A. 4; Art Exhibit 3, 4.



RICKY EUGENE SOWARDS
General

B.A.A. 1, 2, 3, 4; Science Fair 1, 2;
Class Play Crew 3, 4; Ind. Arts Exhibit
1, 2, 3, 4.



GARY GILBERT STEPHENSON
General Business

B.A.A. 1, 2, 3; Newspaper Staff 4.



CAROLYN SUE STIDHAM
General

Science Fair 1, 2, 4; F. H. A. 3, 4; Office
Staff 4; Library Staff 4.



SUSAN TAYLOR REED
General

Science Fair 1, 2, 4; Class Play Crew 3.

• PHYLLIS JEAN WILLIAMS
General

Pep Club 1, 2, 3; Science Club; Speech
Club; Newspaper Staff; Class Play Crew;
Spanish Club.

JEROME LEE WILLIAMS
College Preparatory

Science Fair 1, 2, 3, 4; Track 3; Football
4; B. A. A. 1, 2; Class Play Crew 3.



MICHAEL RAY YARNELL
Industrial Arts

Science Fair 1, 2; Ind. Arts Exhibit 1, 2.



'68



Senior Top Ten



The Senior Class
Presents
"We Shook the Family
Tree."





The Play Cast

(Center) Nikki Fraley, (SEATED - Left to right) Kathy Lewis, Bonnie Lodwick, Andy Adkins, Donna Maynard, Susan Newberry, Damon Cornwell, and Connie Haney. (STANDING - Left to right) Greg Lodwick, Carole Fitch, Leonard Perkins, Phyllis Harper, Brenda Curnutte, Patty Hale, Terry Ross, and Chuck Clevenger.



Senior Trip

April 22, 1968
Norfolk, Va. Gettysburg, Pa.





The Class of 1968

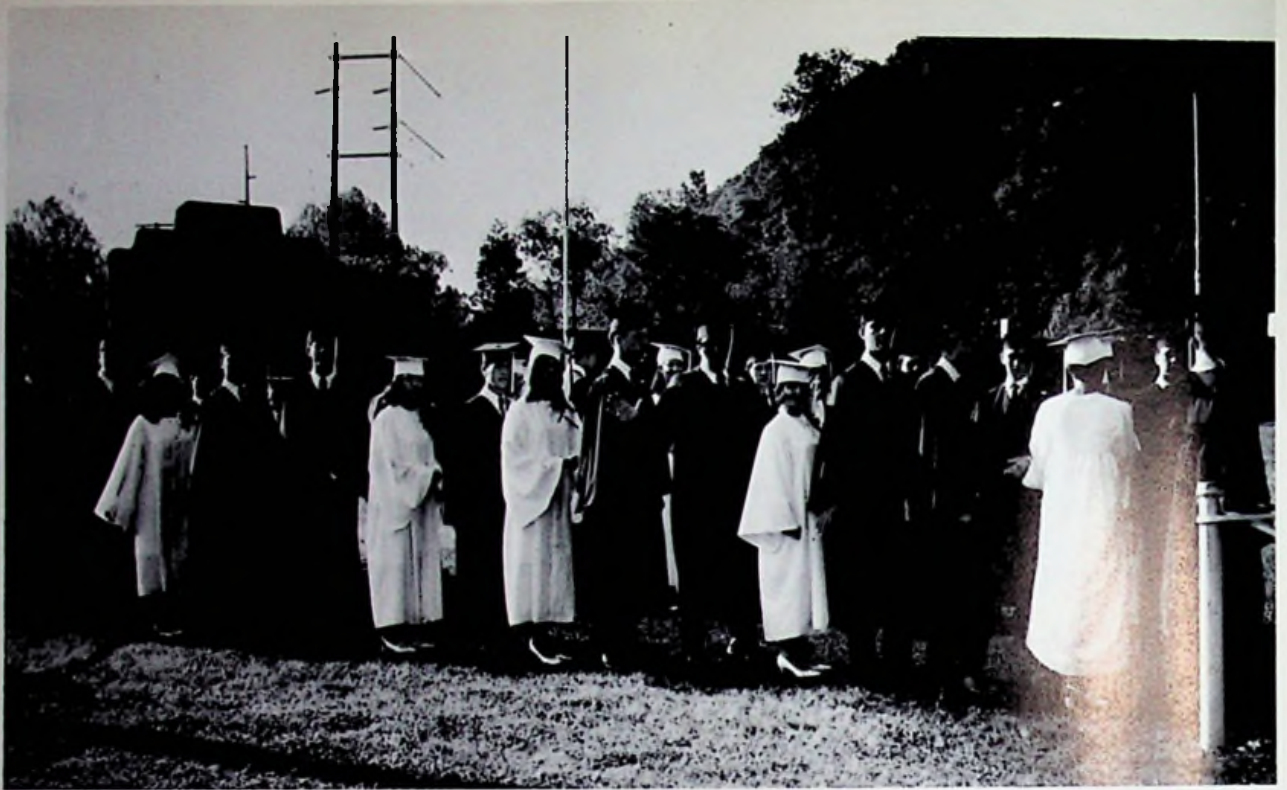
SALUTATORIAN
Charles Clevenger



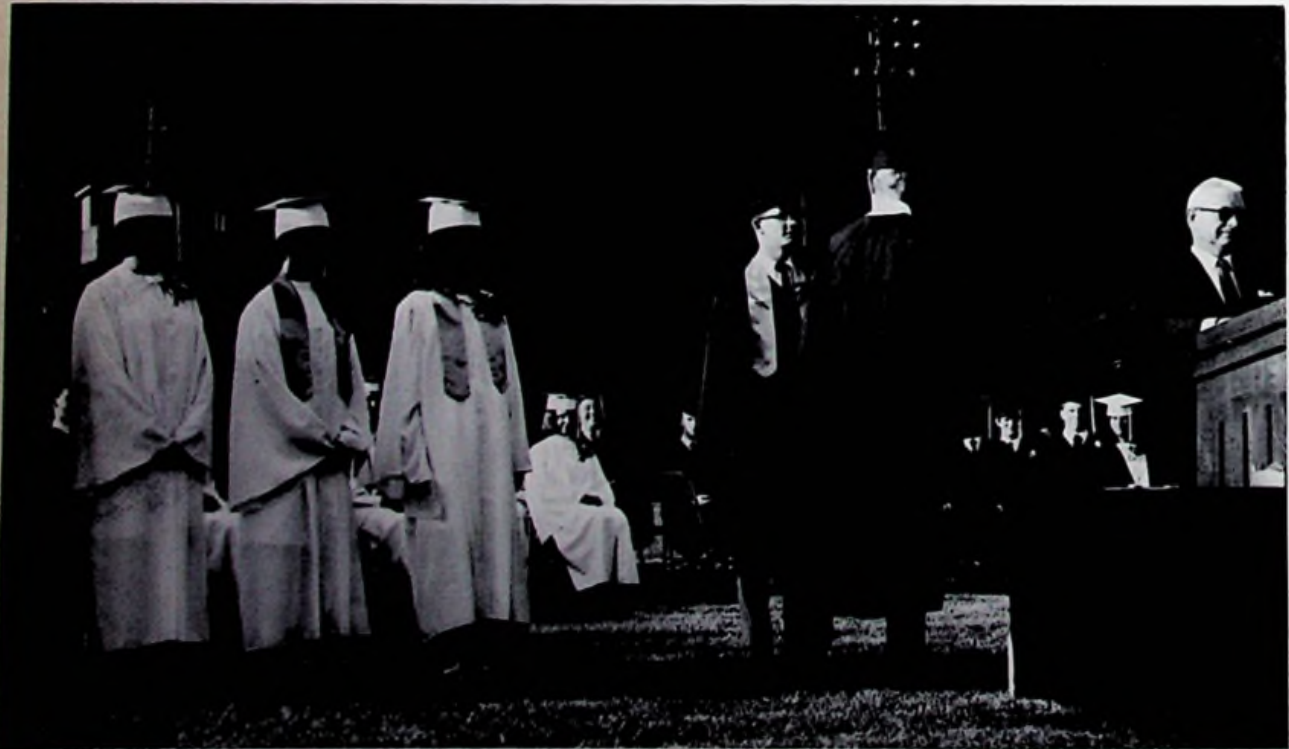
GUEST SPEAKER
Mrs. June H. Shada

VALEDICTORIAN
Brenda Curnutte





As 6:30 approached, each senior took his position for the processional.



Several students receive their college scholarship awards.

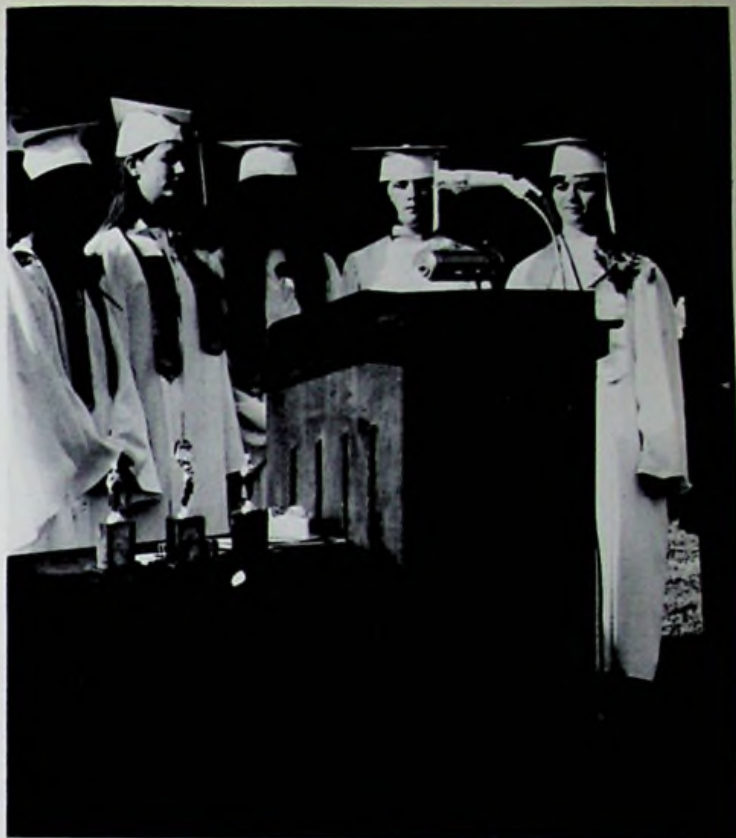
Commencement

June 4, 1968

CLASS FLOWER
Yellow Rose

CLASS COLORS
Brown and Gold

CLASS MOTTO
"Forward ever, backward never"



Making their final performance together, the Senior Sextette steps to the microphone to sing "From Sea to Shining Sea."



Principal, James N. Warren, presents awards to those students graduating with honor.

The Class Prophecy

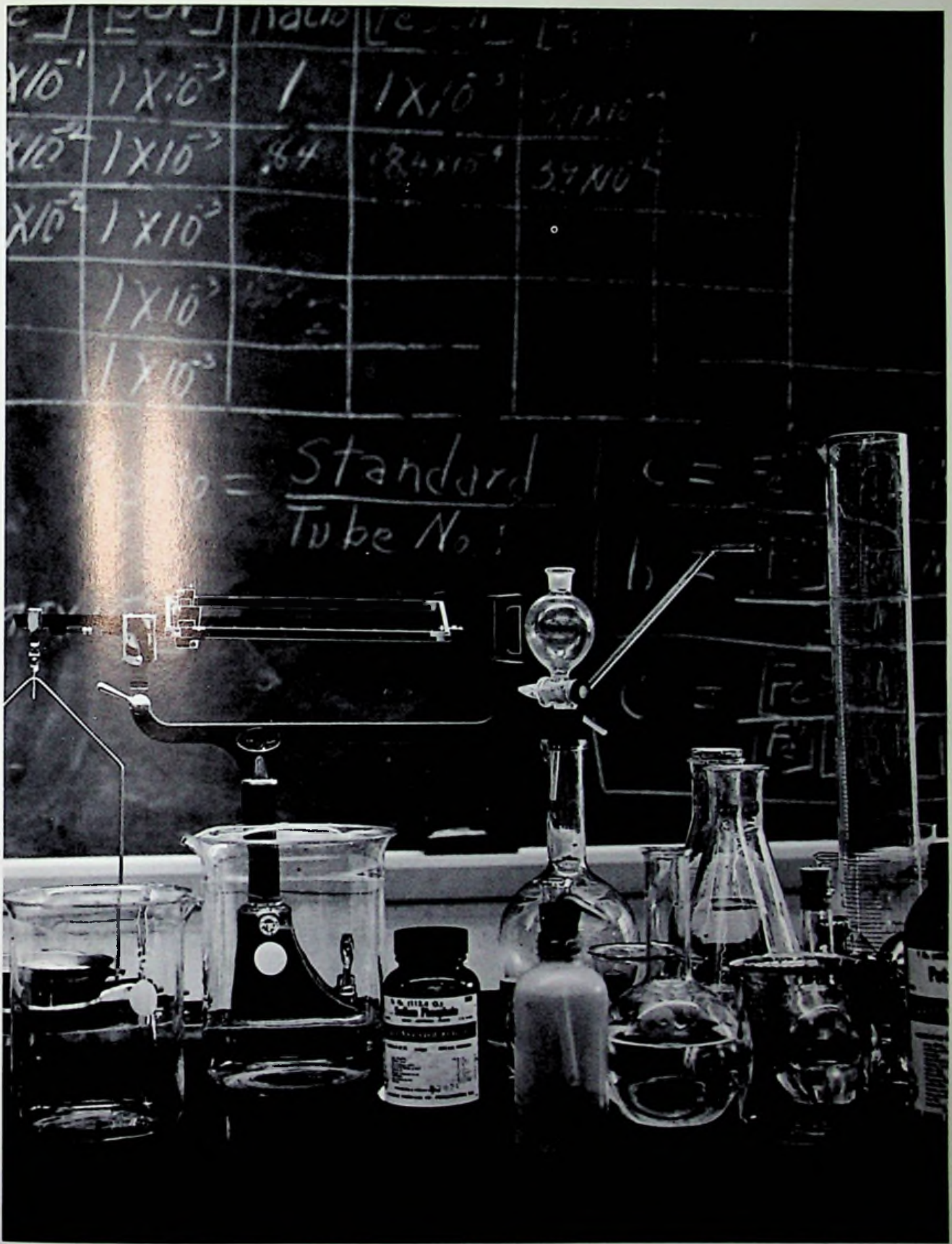
The time was early spring, 1988; the place Gallipolis State Hospital. Head nurse Kathy Lewis and head psychologist Patty Hale brought me the good news; I was well enough to go home. They were taking me back to my old home town after twenty years. We arrived at Port Boston and took a helicopter into town. To our surprise, the pilot was Bob Morrow. After two close shaves and a police chase, we arrived safely at the hotel. Did that building seem familiar? It was - later we learned that Bob Caseman, Rick Sowards, Larry Purdy, and Bill Fannin had pooled their money and had brought the Monticello to New Boston brick by brick. Floyd, the bellboy, says he likes the town, but he misses those \$5 tips he used to get. The maid, Susan Taylor, is still cleaning up the mess. After checking in and tipping Floyd a dime, we visited city hall to see how the town was being run. It was worse than we thought; Mayor Gary Andrews said that a dangerous criminal was on the loose in town - Knuckles Montgen. As we passed by the jail, we heard a prisoner, who turned out to be Bill Bush, complaining that the soup was too thick to drink and too thin to plow. As we walked on down Rhodes Avenue, we saw Steve Patton working in Gifford's Gas Station. A little further on, we came upon the New Boston Holiday Inn, owned by Randy Sizemore. It stands on the former site of Mick's Place, and the service is about the same.

As we came back uptown, we spotted a sign which sported a familiar name: Jean William's Beauty Shoppe. The girls went in to learn all the gossip. An hour later they emerged and told me all that they had learned. Terry Bear now ran Gunther's; Jerry Williams, Famous science-fiction author, had just published his new book, Death In 9880." Phyllis Harper had gone back to Australia and was raising kangaroos to carry the mail. Andy Adkins was the owner of Adkins Chevy, formerly Glockner's. He now drives a 1988 corvette but he had the black bomb bronzed and mounted in his front yard. Don Adkins was the president of the NBA, and Greg Lodwick is the new Grand Dragon of the Ku Klux Klan. Steve Dials now cleans the walrus pen at the Cincinnati Zoo. And Brenda Curnutte now runs an Old Teachers' Home in Cerede-Kenova, W. Va. Rumor has it that Connie Haney is trying for the Miss Portsmouth Pageant for the 17th straight year. Ron and Don Justice just won the internationals in their atomic-powered dragster. Carole Fitch, renowned dress designer, has come with the Fabulous Fitch Fashions, which are modeled by Carolyn Stidham, Bonnie Mathis, and Diana Justice. Patty Eldridge Arrowood is now a marriage counselor. The 23rd Annual Trout Derby, which is not far off, is under the supervision of ranger Damon Cornwell. And Terry Ross has started a fried-chicken chain in Florida. They are called Colonel Ross's Rhode Island Red Rooster Restaurants.

As we walked up Gallia Street, we passed the Country Music Hall, owned and operated by Donna Maynard. Further on, we passed Mama Su's Pizza Hut, owned by Susan Newberry, and the Blue Bird Bakery, owned by Nikki Fraley.

Up by the stadium we came to the hi-rise high school. Upon entering, we saw janitors Mike Yarnell and Terry Leonard mopping the floors. They directed us to the principal's office, where we found principal Ed Howell with his secretary Donna Littleton. He told us of the many changes in the faculty. Bonnie Lodwick teaches Senior English, Carol Fannin is the band director, and Leonard Perkins teaches home economics. Steve Skeens is head football coach - they say he's the only one with the stomach for the job.

The strain of the visit was too much for us - we all three had a relapse. And we know for certain that we came from the nuttiest class ever to leave Glenwood - the class of '68.



JUNIORS

Junior Class Officers



The Class of "69"

TREASURER

Jim Bloomfield

VICE-PRESIDENT

Cheryl Newberry

PRESIDENT

Debbie Foit

SPONSORS

Mrs. Wellman

Mr. Stroth

SECRETARY

Debbie Cooper

REPORTER

Pam Williams



*Junior Senior
Prom*

*May 25, 1968
Elk's Country Club*



Junior Prom

Tahitian

Here are some scenes taken at the Junior Senior Prom indicating that everyone enjoyed himself as he listened to the music of "The Hustlin Soul Brothers."



Senior
1968



'Twilight'



Michael Benner
James Bloomfield
Roger Burton
Sherri Canale
William Canale



Karen Chaney
Daniel Charles
John Clerico
Linda Collier
Debbie Cooper



Kay DeLotell
Mary Fannin
Debbie Foit
Billy Grimm
Rita Hardin



Junior's Class Play

Phillip Harding
Michael Henson
Judy Jennings
Dennis Jordan
Shirley Lawhun



Dean Lodwick
David Lute
Cheryl Newberry
Stan Parlin
Tony Perkins



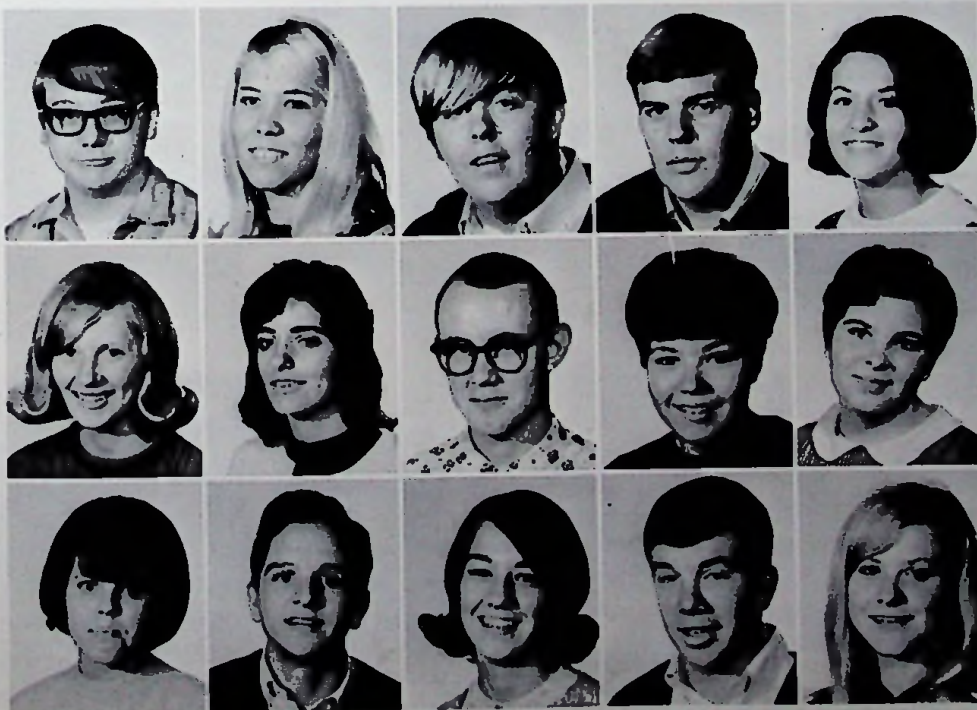
Barry Porter
Pamela Potts
Jack Rice
Paul Riffe
Shirley Roe





Oh no Papa! We just can't move.

Huge Success!



John Schomburg
Wanda Sizemore
Koy Sowards
Jerry Spears
Linda Stidham

Janet Turner
Anita Wadkins
Mike Ward
Jane Weaver
Debbie Williams

Diane Williams
John Williams
Pam Williams
Jack Wolfe
Peggy Yeley

"Meet Me In St. Louis"

Presented by Junior Class



When four sisters are excited about the World's Fair that is about to open in St. Louis, it is hard for their father to announce that he has been offered a better job in New York. After Father tells of the news, the girls unite for action. Although their strategy almost lands the family in jail, they persist in their battle to stay where they've been.

They finally win through with a solution.





THE CAST

Conductor - - - - - Phillip Harding
 Mr. Smith - - - - - Dan Charles
 Mrs. Smith - - - - - Cheryl Newberry
 Rose - - - - - Debbie Cooper
 Esther - - - - - Debbie Foit
 Agnes - - - - - Mary Fannin
 Tootie - - - - - Karen Chaney
 Lon - - - - - John Clerico
 Grandpa Prophater - - - - - Stan Parlin
 Katie - - - - - Jane Weaver
 Mrs. Waughop - - - - - Janet Turner
 Ida Boothby - - - - - Judy Jennings
 John Shephard - - - - - John Williams
 Fred Gregory - - - - - Bill Grimm
 Lucille Pentard - - - - - Peggy Yeley
 Mr. Dodge - - - - - Koy Sowards
 Mr. Duffy - - - - - Jim Bloomfield
 Mr. Daum--Director



PLACE: St. Louis
 TIME: Late Spring, 1904
 SETTING: The World's Fair



SOPHOMORES

Sophomore Officers and Sponsors



The Class of "70"

REPORTER

Lana Clifton

VICE-PRESIDENT

Brenda Emshwiller

SPONSORS

Mrs. Schisler

Mr. Jenkins

PRESIDENT

Debbie Moore

SECRETARY

Annie Thompson

TREASURER

Cheryl McClure



Suzy Adkins
Deidra Beadle
Greg Carr
Opal Carver
Tom Clevenger



Lana Clifton
Greg Coburn
John Cooper
Darrell Day
Fred Dodd



Brenda Emshwiller
Deborah Fannin

Spirited



Sam Fannin
Phil Fitch
Ricki Fraley



Leroy Goshert
Paul Grant
James Gulley
Paula Hale
Lester Howell



Terry Jones
Tom Jones
Debbie Justice
Steve Justice
Rita Keeney



Kathy Lodwick
Faris Lowder
Randy Lytten
Cheryl McClure
Jo Ellen McKelvey

Brenda Marler
 Mike Mathis
 Tom Mathis
 Sue Mercer
 Debbie Moore



Tony Moore
 Brenda Murray
 Vondon Newman
 Scott Oliver
 Vicky Osborne



Pat Parlin
 Vicki Patrick
 Vonald Patrick



Supporters

Roberta Presley
 Verna Riffe
 Raymond Roberts



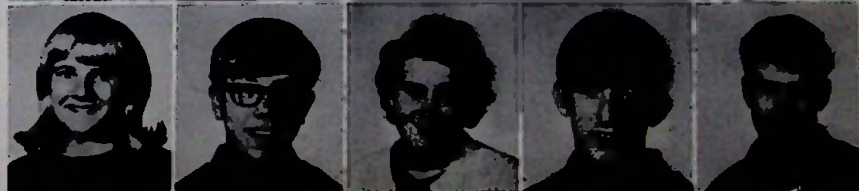
Teresa Roberts
 Rebecca Rowles
 Grant Salyers
 Deborah Shoemaker
 Donald Skaggs



Cheryl Smith
 Jolene Stanley
 John Steele
 Ernie Thomas
 Annie Thompson



Beverly Tingler
 Mark Upton
 Sarah Ward
 Rickey Whisman
 Dave Williams





FRESHMEN

Freshman Officers and Sponsors



The Class of "71"

REPORTER

Bill Newberry

VICE-PRESIDENT

Patty Grant

SPONSORS

Mr. Bond
Mr. Rowland
Mr. Simpson

PRESIDENT

Phylis Slone

SECRETARY

Barbra Reinhardt

TREASURER

Vicki Holsinger

Marvin Adkins
 Sharon Adkins
 Gail Baker
 Mike Canale
 Jane Clevenger



Connie Cline
 Kenneth Collier
 Judy Combs
 Nancy Cooper
 Glen Darby



Yvonne Darby
 Diana Day
 Tonda Davis
 Judy Dunham
 Randy Dunn



Rick Eldridge
 Pam Ferguson
 Chuck Figgins
 Dave Fitch
 Jerri Fraley



Jerry Gill
 Patty Grant
 Susan Groh
 Steve Hamilton
 Loren Hardin



Carolyn Harr
 Vickie Holsinger
 Bobby Horsley
 Gary Howard
 Linda Howell



Patsy Jordon
 Debbie Justice
 John Kenney
 Mark Lewis
 Kevin Lodwick



Lana Mathis
 Lily McKenzie
 Paul Mccorkle
 Rusty Milliron
 Delmar Montgomery



Freshmen Complete Adjustment Year



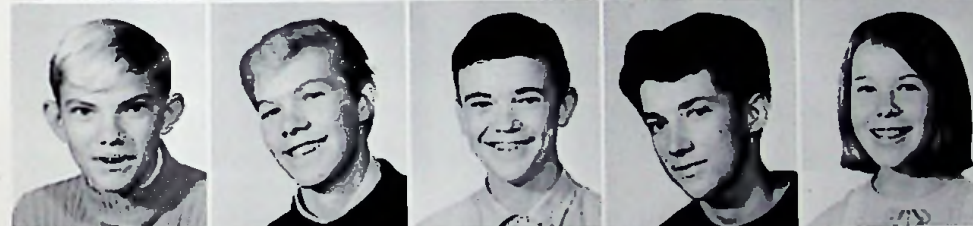
Danny Murray
Bill Newberry
Maria Pellegrinon
Kristie Phillips
Randy Peirce



Kathy Pottenger
Wanda Potts
Dave Pugh
Barbara Reinhardt
Don Rice



Ralph Rigley
Candice Shump
Debbie Sizemore
Phyllis Slone
Beverly Sparks



Bob Stanley
Joe Stanley
Larry Stevens
Jim Stidham
Marilyn Sutton



Karen Tindall
Terry Wadkins



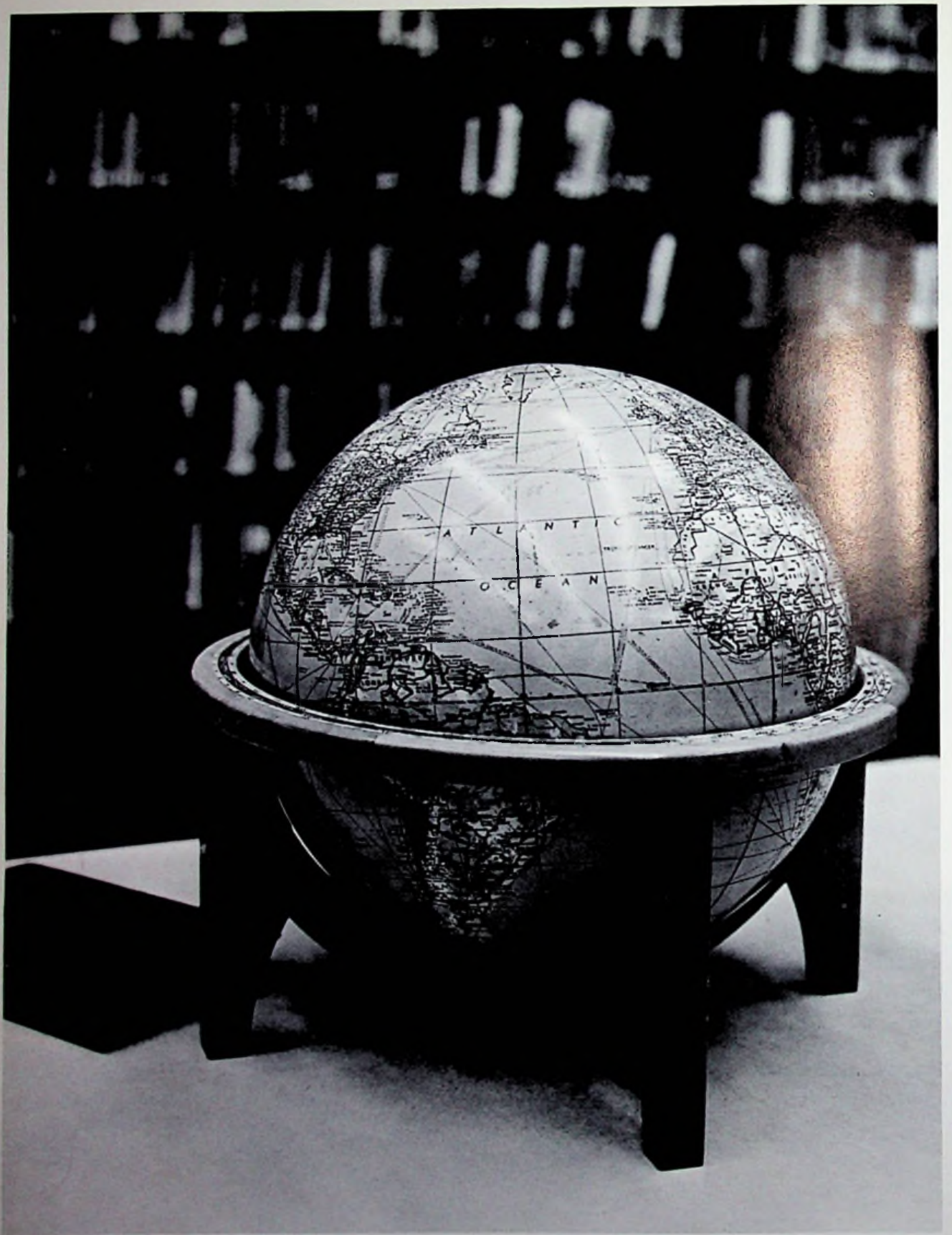
Butch Weaver
Steve Williams



Debbie Williamson
Bill Wright



Freshmen display School Spirit as they participate in LOUD-MOUTH CHEER.



JUNIOR HIGH



8th Grade Officers

(SEATED) Advisors - Mr. Groh and Mrs. Clerico (STANDING) Jane Thacker, Patty Sizemore, Susan Gilley, Patsy Jordan, and Pam Porter.

8th Grade, Winner of "Loudmouth Award" Many Times

Angela Adams
Duane Adkins
Kay Baker
Susan Bolotta
Danny Broughton



David Brown
Sue Burton
Jeff Charles
Marlene Clausing
Jean Crisp

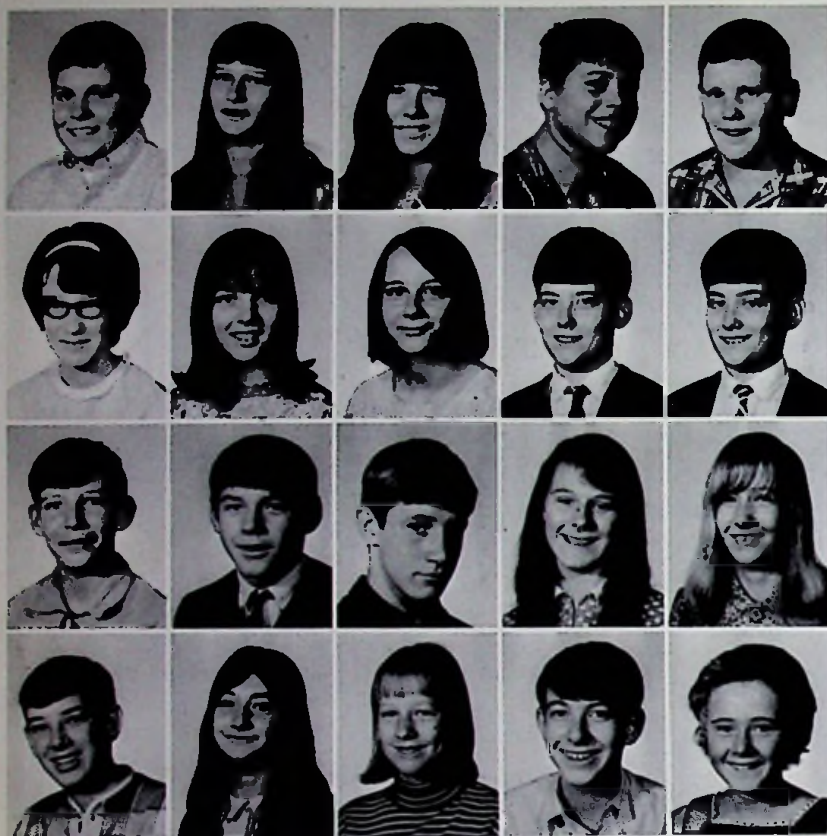


Lena Culver
Carol Davis
Mike Dunham
Kenneth Dunn
Susan Gilley



Leroy Ginn
Mary Goddard
Vallerie Gregory
Randy Grigsby
Dean Hamilton





Robin Hancock
Linda Henson
Connie Holsinger
David Horsley
Paul Ison

Bonnie Jackson
Penny Jordan
Donna Justice
Larry Layne
Jerry Layne

David Liles
Eddie Matthews
Joey McKelvey
Deborah Messer
Elaine Metzler

David Moore
Terry Moore
Jane Newberry
Bob Osborne
Pam Porter

8th Grade

Paula Riffe
Larry Rigley
Albert Salyer
Phillip Seth
Roger Seth

Patty Sizemore
Jerry Skaggs
Keith Strehle
Mary Stone
Brenda Sweeney

Jane Thacker
Tawnya Toms
Tom Ward
Kenneth Weekly
John Whisman

J. D. White
Steve Williams



7th Grade Officers



(BACK ROW) Mr. Darling, and Mr. Cullum - advisors. (FRONT) Barbara Sutton, Mark Kenney, Leigh Ann Gregory, Junior Williams, and Connie Cobum.

Scared 7th Graders Enter High School Building.

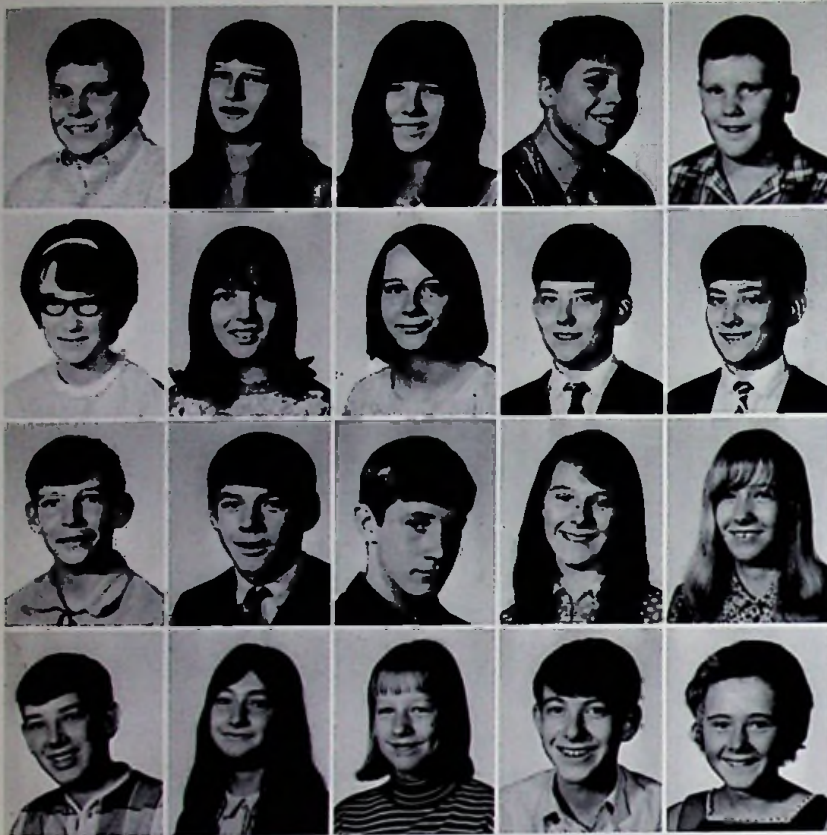


Rickey Adkins
Donna Andrews
Wayne Burton
Cynthia Caprenter
Carl Clark

Nancy Clevenger
Connie Coburn
Brenda Collier
Teresa Conley
Steve Cooper

Jeff Craig
Cynthia Darby
Pam Dockery
Jeff Dodds
Dawn Elkins

Darwin Frazier
Cathy Gilley
Lynn Goshert
Leigh Ann Gregory
Elizabeth Gulley



Robin Hancock
Linda Henson
Connie Holsinger
David Horsley
Paul Ison

Bonnie Jackson
Penny Jordan
Donna Justice
Larry Layne
Jerry Layne

David Liles
Eddie Matthews
Joey McKelvey
Deborah Messer
Elaine Metzler

David Moore
Terry Moore
Jane Newberry
Bob Osborne
Pam Porter

8th Grade

Paula Riffe
Larry Rigley
Albert Salyer
Phillip Seth
Roger Seth

Patty Sizemore
Jerry Skaggs
Keith Strehle
Mary Stone
Brenda Sweeney

Jane Thacker
Tawnya Toms
Tom Ward
Kenneth Weekly
John Whisman

J. D. White
Steve Williams



7th Grade Officers



(BACK ROW) Mr. Darling, and Mr. Cullum - advisors. (FRONT) Barbara Sutton, Mark Kenney, Leigh Ann Gregory, Junior Williams, and Connie Coburn.

Scared 7th Graders Enter High School Building.



Rickey Adkins
Donna Andrews
Wayne Burton
Cynthia Caprenter
Carl Clark



Nancy Clevenger
Connie Coburn
Brenda Collier
Teresa Conley
Steve Cooper



Jeff Craig
Cynthia Darby
Pam Dockery
Jeff Dodds
Dawn Elkins



Darwin Frazier
Cathy Gilley
Lynn Goshert
Leigh Ann Gregory
Elizabeth Gulley

Mike Hanna
 Brenda Jackson
 Richard Kamer
 Mark Kenney
 Leslie Kindinger



Eddie Logan
 Larry Lute
 Raul Marler
 Rodney Mershon
 John Miller



Jeff Moore
 Gary Patrick
 Karen Payton
 Jim Paxson
 Steve Pottenger



Bishop Presley
 Andy Reinhardt
 Paula Ruark
 Salyers Teresa
 Julie Schomburg



7th Grade



Rickey Schwalbach
 Tim Skaggs
 Kathi Stapleton
 Donna Stevens
 Nora Stone



Barbara Sutton
 John Swanner
 Robert Tindall
 James Turner
 Danny Walker



Roseann Weekly
 Cynthia Wellman
 Linda Wells
 Rita Whisman
 Ronald Whisman



Brenda Williams
 Junior Williams



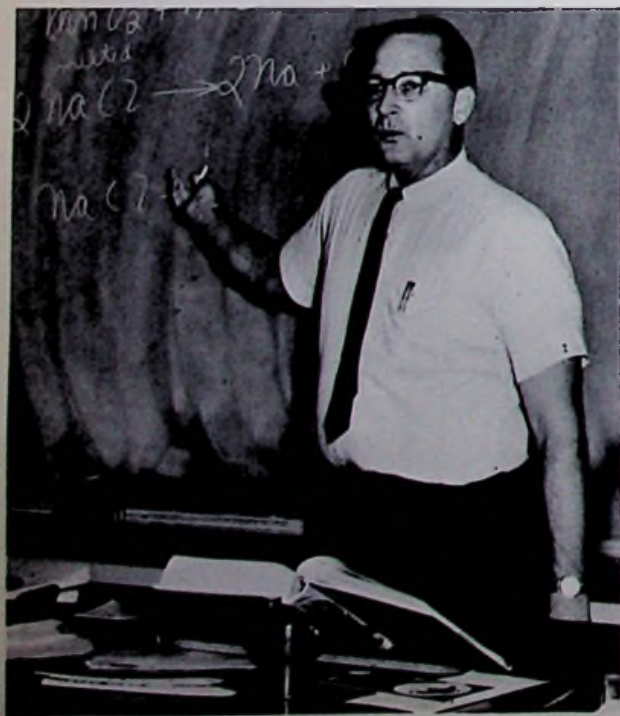
CLASSES



MRS. CLERICO
Commercial



MR. CULLUM
Business Education



MR. GROH
Science



MR. DAUTEL
Math.



MR. WASHINGTON
Yearbook Adviser and Art



MR. SIMPSON
History



MR. HUNT
Math.



MRS. SCHISLER
Physical Education, Health, English



MR. JENKINS
Social Studies, Drivers Education



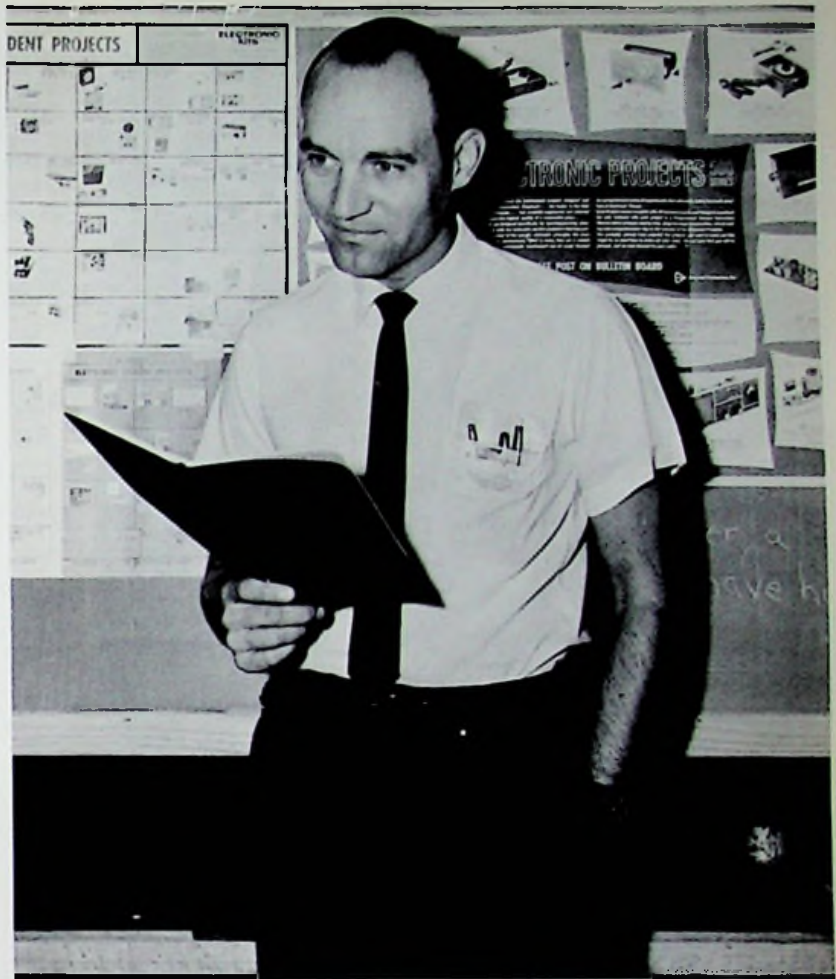
MR. DARLING
Social Studies



MR. DUNCAN
Science



MR. BOND
Math, English



MR. STROTH
Industrial Arts



MR. DAUM
Social Studies



MR. ROWLAND
French, English, Speech



MR. PELLEGRINON
Physical Ed. and Health



MR. GRABHAM
Band



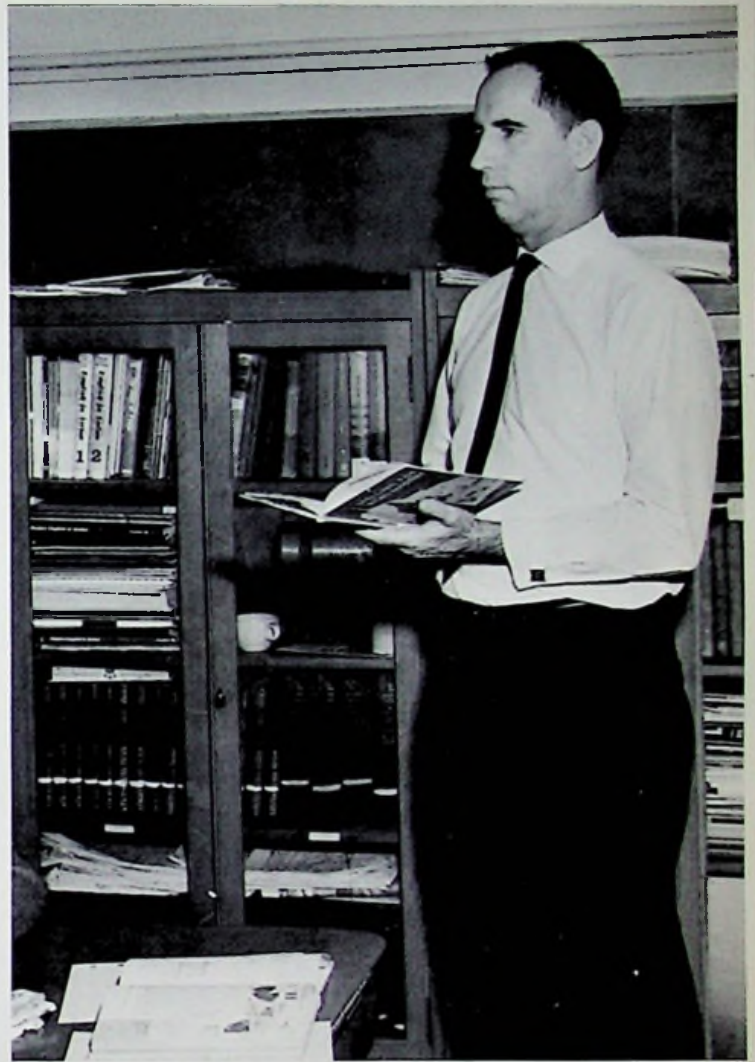
MRS. PARRISH
Vocal Music



MISS JOSEPH
Home Economics



MISS PAULEY
Science



MR. NEWBERRY
English



MRS. WELIMAN
English and Spanish



FAVORITES

67-68 Squad Spurs School Spirit



CHEERLEADERS

(Left to Right) Brenda Emshwiller, Peggy Yeley, Connie Haney, Kathy Lewis, Patty Hale, and Nikki Fraley.



SENIOR



JUNIOR



SENIOR-CAPTAIN

SENIOR

SOPHOMORE

SENIOR





Miss Tiger Touchdown

1967-68

NIKKI FRALEY



BONNIE LODWICK
Senior



KAREN CHANEY
Junior

Queen's Court

1967



JO ELLEN MCKELVEY
Sophomore



DEBBIE JUSTICE
Freshman



H
o
m
e
c
o
m
i
n
g



Yearbook

King and Queen

Patty Hale Bob Morrow



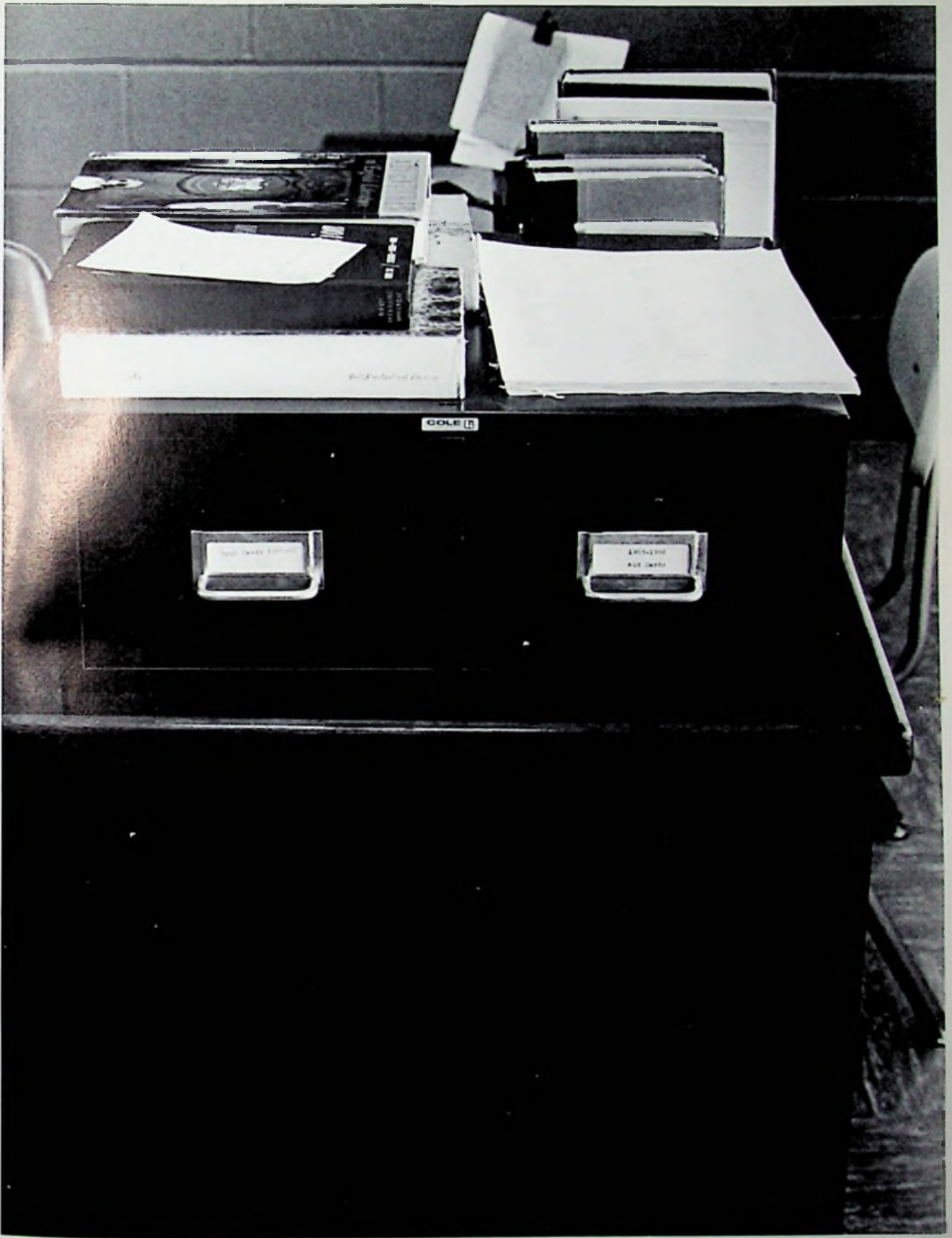


'67-68

Majorettes

(Left to Right) Debbie Cooper, Donna Maynard, Barbara Reinhardt, Annie Thompson, Suzy Adkins, and Carole Fitch - Head Majorette.





ORGANIZATIONS



HAROLD CULLUM
Sponsor

National Honor Society



PATTY HALE
President



B. CURNUTTE
V. President



K. LEWIS
Secretary



C. CLEVENGER
Treasurer



S. NEWBERRY
Chaplain



(Left to right) STANDING: Debbie Moore, Verna Riffe, Pam Williams, Cheryl Newberry, John Clerico, Suzy Adkins, Annie Thompson, Cheryl McClure, Connie Haney. (SITTING) John Cooper, Susan Newberry, Chuck Clevenger, Brenda Curnutte, Mr. Cullum, Patty Hale, Kathy Lewis, Bob Morrow, Donna Maynard.

Scenes From Induction





Office Staff

Left to right: Diane Justice, Debbie Cooper, Donna Maynard, Paula Hale, Connie Haney, Mrs. Riffe, Carolyn Stidham.

Library Staff

(ROW 1) Left to right: Carolyn Stidham, Lois Fannin, Lana Clifton, Rita Keeney, Kathy Lodwick, Debbie Foit, Brenda Curnutte. (ROW 2) Carol Fannin, Deidra Beadle, Janet Turner, Shirley Roe, Bonnie Lodwick, Miss Curry (Head Librarian), Peggy Yeley, Pamela Williams, Judy Jennings, Joleen Stanley.





Scholarship Team

Left to Right: (STANDING) John Schomburg, Roger Burton, Rusty Milliron, Dan Charles, John Clerico, Mark Upton, Raymond Roberts, John Cooper, Greg Coburn. (2nd ROW) Patty Hale, Susan Newberry, Barbara Reinhardt, Kathy Pottenger, Pam Ferguson, Pam Williams, Jo Ellen McKelvy, Chuck Clevenger. (3rd ROW) Dave Fitch, Cheryl McClure, Sue Mercer, Suszy Adkins, Paula Hale, Debbie Fannin, Brenda Curnutte, Cheryl Newberry. (4th ROW) Rita Keeney, Debbie Moore, Verna Riffe, Jim Gulley, Mary Fannin, Marilyn Sutton, Brenda Murray.

Sophomore Sextet

Left to Right: Susie Adkins, Sue Mercer, Vicki Patrick, Annie Thompson, Paula Hale, Debbie Moore, Verna Riffe.





Senior Girls Sextette

CAROLE FITCH	BONNIE LODWICK
PATTY HALE	DONNA MAYNARD
CONNIE HANEY	SUSAN NEWBERRY

ACCOMPANIST
DEBBIE COOPER

Spelling Bee Winners

FIRST PLACE
Angela Adams

SECOND PLACE
Barbara Sutton

THIRD PLACE
Brenda Williams





Freshman Sextet

(FIRST ROW) Left to right: Kristie Phillips, Gail Baker, Jane Clevenger, Nancy Cooper, Maria Pellegrinon.
 (BACK ROW) Kathy Pottenger, Pam Ferguson, Diane Day, Barbara Reinhart. (SEATED) Marilyn Sutton.

Glee Club

(FIRST ROW) Marilyn Sutton, Lana Mathis, Debbie Cooper, Nancy Cooper, Patti Hale, Ricki Fraley, Vickie Patrick, Suzy Adkins, Carole Fitch. (2nd ROW) Connie Haney, Kristie Phillips, Phyllis Harper, Cheryl Newberry, Susan Newberry, Diane Day, Barbara Reinhardt, Bev Sparks, Kathy Pottenger, Pam Ferguson, Mrs. Parrish.
 (3rd ROW) Sharon Adkins, Gail Baker, Patsy Jordan, Maria Pellegrinon, Bev Tingler, Paula Hale, Jerri Fraley, Debbie Shoemaker, Debbie Moore, Verna Riffe. (4th ROW) Bonnie Lodwick, Donna Maynard, Sue Mercer, Annie Thompson, Cheryl McClure, Jane Clevenger, Debbie Sizemore, Patty Grant, Debbie Justice, Terry Roberts.





Newspaper Staff

Left to right: Carol Fannin, Donna Littleton, Mrs. Clerico, Diane Justice, Nikki Fraley, Gary Stephenson.

Business Club

(ROW 1) Left to right: Mrs. Clerico, Debbie Foit, Debbie Shoemaker, Rita Keeney, Lana Clifton, Beverley Tingler, Nikki Fraley, Donna Littleton, Mr. Cullum. (ROW 2) Rikki Fraley, Annie Thompson, Vicki Osborn. (ROW 3) Opal Carver, Debbie Fannin, Cheryl Smith. (ROW 4) Wanda Sizemore, Jane Weaver, Janet Turner. (ROW 5) Diane Justice, Carol Fannin.





Pep Band

(FRONT ROW, Left to right) Kristie Phillips, Bonnie Lodwick, Barbara Reinhardt, Pam Williams, Kenny Dunn, David Liles, (2nd) Philip Harding, Donald Skaggs, Dean Hamilton, Scot Oliver, Gail Baker, (STANDING) Bill Bush, Jack Rice, Sue Mercer, Robin Hancock, John Schomburg, and J. D. White.

French Club

(FRONT ROW, Left to right) Leroy Goshert, John Williams, Jim Gulley, Jane Clevenger, Nancy Cooper, Marilyn Sutton, Susan Groh, Lana Mathis. (2nd) Mr. Rowland, Vonald Patrick, John Williams, JoEllen McKelvey, Dean Lodwick, Peggy Yeley, Ralph Rigley, Darrell Day, Tom Jones, Barbara Reinhardt, Terri Roberts, Brenda Murray, Suzy Adkins, Sue Mercer, Diana Day, Kristi Phillips, Kathy Pottenger. (STANDING) Stan Parlin, Randy Pierce, Rickie Eldridge, Pat Parlin, Carolyn Harr, Larry Stevens, Mark Keeney, Tom Clevenger.





Pep Club Cabinet

Left to right (KNEELING): Marilyn Sutton, Debbie Shoemaker, Beverley Tingler, Jerri Fraley. (SITTING) Cheryl Newberry, Wanda Sizemore, Mrs. Schisler (Cheerleading Sponsor), Kathy Lodwick (President), Paula Hale. (STANDING) Susan Groh, Terry Moore, Debbie Sizemore, Carolyn Harr, Deidra Beadle, Kay Baker, Susan Gilley, Cheryl McClure, Nancy Cooper, Maria Pellegrinon.

FHA

Left to right (SITTING): Debbie Fannin, Linda Collier, Rikki Fraley, Carolyn Stidham, Rita Hardin, Miss Joseph (Home Economics Teacher), Carol Fannin, Linda Stidham, Diane Justice, Marion Linne. (STANDING) Patti Eldridge, Jane Weaver, Debbie Justice, Patty Grant, Wanda Sizemore, Beverley Tingler, Vicki Osborne, Brenda Marler, JoEllen McKelvey, Opal Carver, Cheryl Smith, Pamela Potts, Wanda Potts, Donna Littleton, Sharon Adkins.





The Tiger Pep Club

RAH!

RAH!!

RAH!!

RAH!



The Glenwood High Marching Band

Junior Editor



JOHN CLERICO

The Yearbook Staff

Editor-in-Chief



CONNIE HANEY

Adviser

MR. I. D. WASHINGTON



Ad Solicitors

Left to right (FIRST ROW): Bonnie Lodwick, Dan Leadingham, Steve Patton, Chuck Clevenger, Nikki Fraley. (SECOND ROW) Connie Haney, Pam Williams, Judy Jennings, Debbie Foit, Peggy Yeley, Susan Newberry. Not pictured: Kathy Lewis, John Clerico.

Jr. Asst. Editor

Photographer

Typist

Photographer



DEBBIE FOIT



CHUCK CLEVENER



PATTY HALE



DAN CHARLES



ATHLETICS



The Glenwood Tigers

(ROW 1) Left to right: Gary Patrick, Leroy Goshert, Steve Patton, Bill Wright, Bill Newberry, Pat Parlin, Loren Hardin, Ralph Wrigley, Jim Gulley. (ROW 2) Nancy Sizemore, Don Adkins, Andy Adkins, Mike Glenn, Jerry Williams, Terry Ross, Steve Dials, Leonard Perkins, Steve Skeens. (ROW 3) Coach Pauley, Coach Dautel, Coach Phillips, Chuck Clevenger, Darrell Day, Vonald Patrick, Dean Lodwick, Butch Weaver, Mike Canale, Bob Morrow, Coach Darling, Coach Jenkins, Head Coach - Tom Hunt.



FOOTBALL COACHING STAFF

Left to right: Tom Hunt (Head Coach), Coach Phillips, Coach Darling, Coach Dautel, Coach Jenkins, Coach Pauley.

Tiger Scoreboard

	WE	THEY
Wheelersburg	14	6
West	0	48
Minford	6	20
Valley	16	36
Piketon	38	0
Northwest	12	36
East	8	12
Notre Dame	0	66
Waverly	6	54
East	12	25

Senior



Bob Morrow



(TRI-CAPTAINS)

Andy Adkins

Randy Sizemore

Mike Glenn



Terry Ross



Steve Skeens



Leonard Perkins

Players



Steve Dials



Jerry Williams



Chuck Clevenger



Don Adkins



Steve Patton



BOB MORROW
Captain



JOHN CLERICO



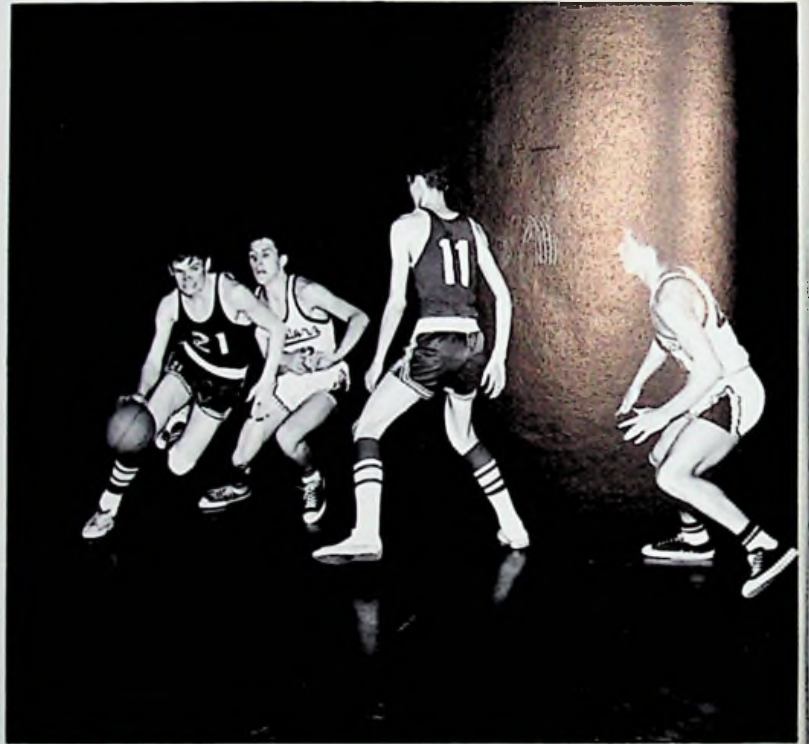
TONY PERKINS



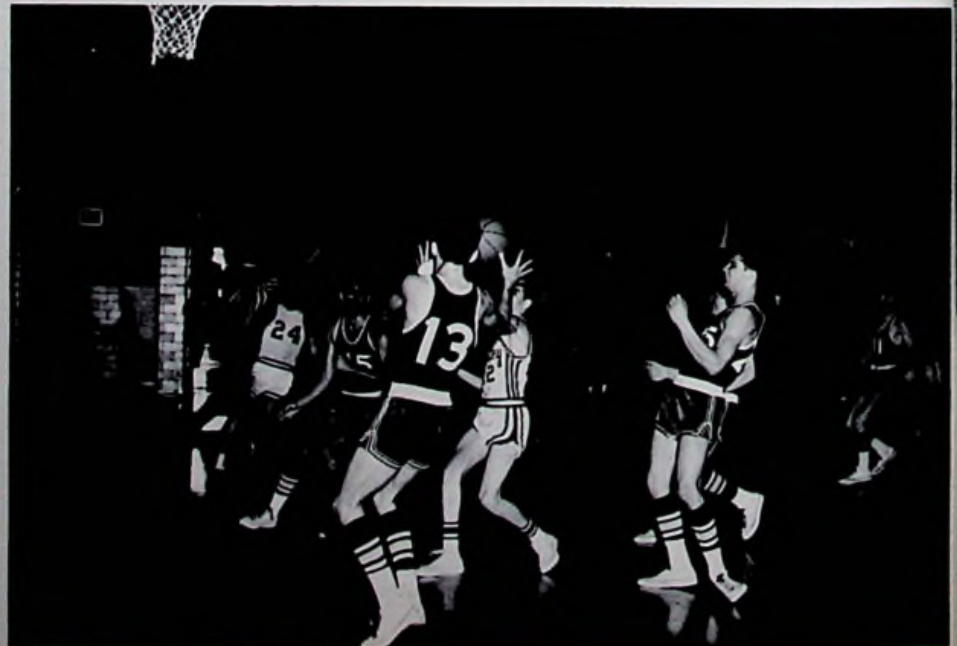
TOM DODDS



BOB CASEMAN



T
i
g
e
r
s





Barry Porter



Tom Mathis



Mike Glenn



Stan Parlin

Basketball '68



Varsity Basketball Team

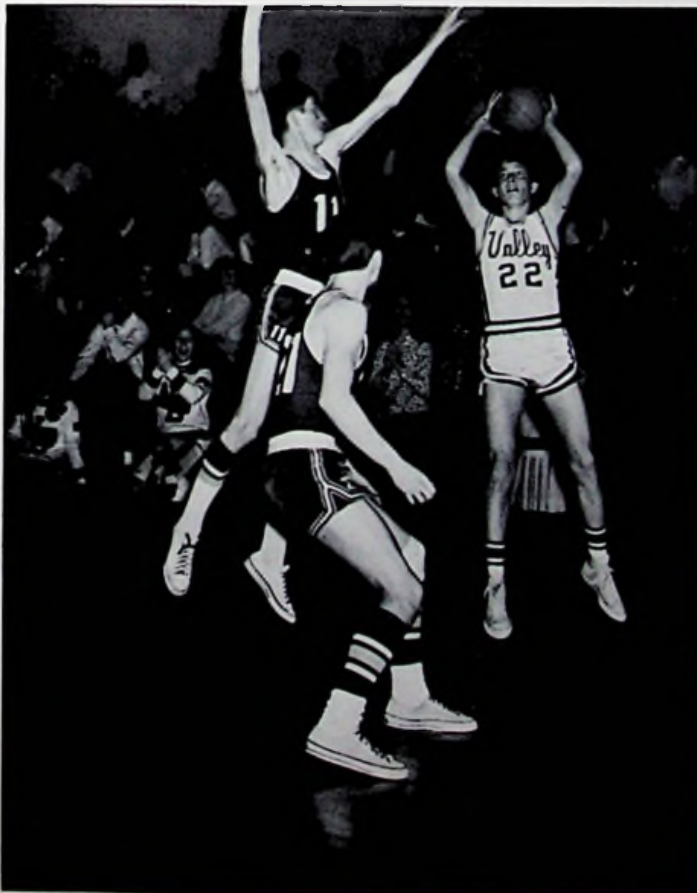
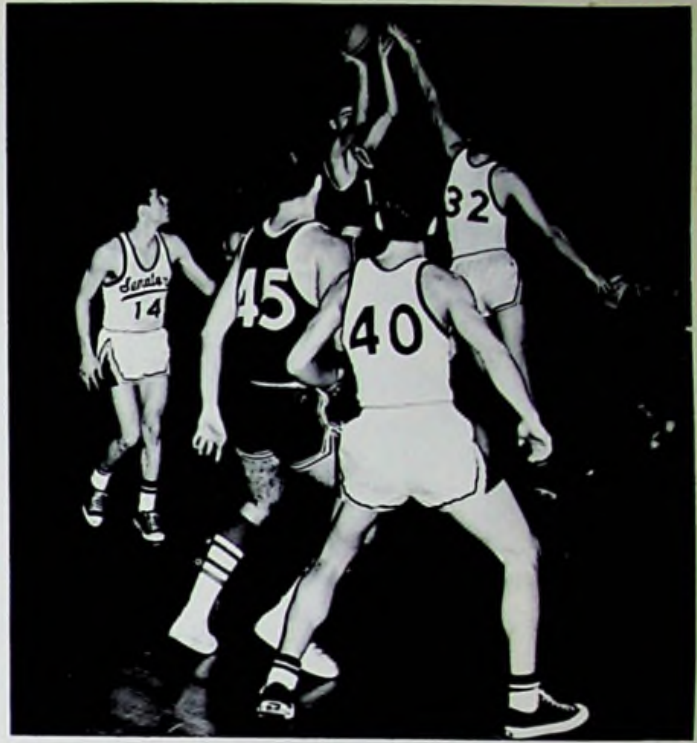
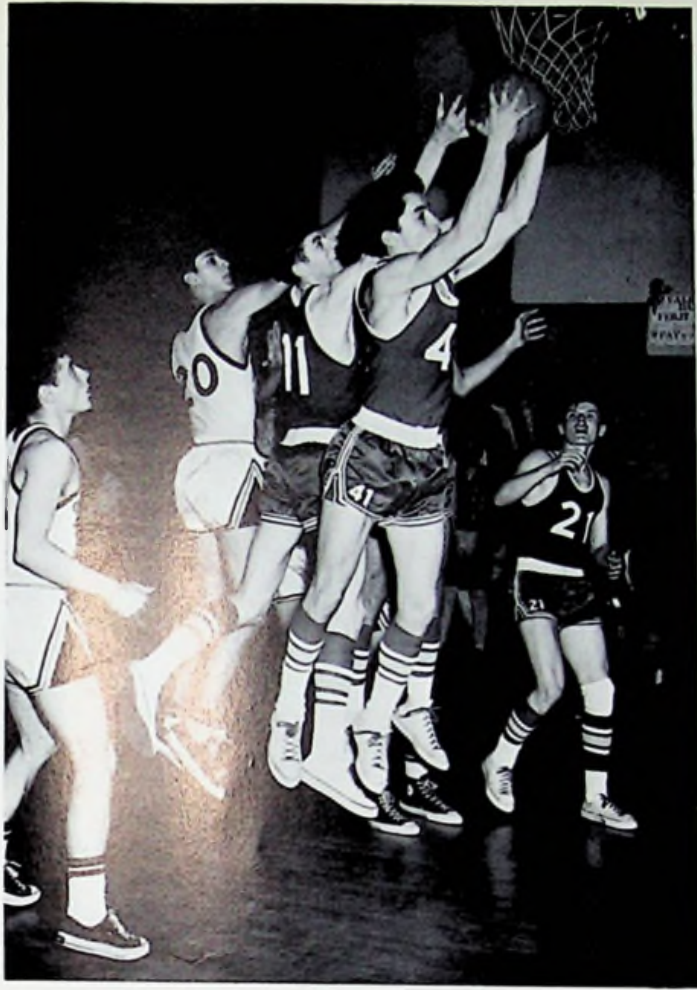
(Left to Right) Stan Parlin, Tony Perkins, Bob Morrow, Mike Glenn, John Clerico, Tom Dodds, Tom Mathis, Barry Porter, Bob Morrow, and Coach Pellegrinon. (Kneeling) Fred Dodd and Dan Charles.



Tiger Scoreboard

OPPONENT	WE	THEY	OPPONENT	WE	THEY
Notre Dame	51	55	East*	81	69
Chesapeake	54	53	South Webster	64	47
Northwest*	51	49	Piketon	77	58
Minford*	63	70	Wheelersburg*	62	66
Piketon	89	73	Clay	40	74
South Webster	62	56	West*	72	62
Waverly*	53	76	Notre Dame*	63	64
Clay	54	67	Valley*	61	64
SECTIONAL TOURNAMENT					
South Webster	66	49	Clay	43	70

*Denotes S. O. C. games



Basketball Coaching Staff

JR. HIGH
Neil Stroth

VARSITY
Homer Pellegrinon

RESERVE
Joe Jenkins

SCOUT
Ralph Darling



Junior High Basketball

(FRONT ROW, Left to right) Tom Ward, Darwin Frazier, Junior Williams, Jeff Dodds, J. D. White, Rick Adkins.
(STANDING) Mr. Stroth, Robin Hancock, Jerry Skaggs, Joey McKelvey, Eddie Mathews, and Bob Osborne.





Reserve Basketball Team

(FRONT ROW, Left to right) Bill Wright, Sam Fannin, Rick Eldridge, Pat Parlin, Marvin Adkins. (STANDING) Mr. Jenkins, Phil Fitch, Tony Moore, Bill Newberry, Joe Stanley, Vonald Patrick, Ralph Rigley, and Leroy Goshert.

Scoreboard

	WE	THEY
Notre Dame - - - - -	32	28
Chesapeake - - - - -	48	29
Northwest - - - - -	48	31
Minford - - - - -	45	50
Piketon - - - - -	57	50
South Webster - - - - -	52	34
Waverly - - - - -	39	32
Clay - - - - -	29	51
East - - - - -	43	50
South Webster - - - - -	33	26
Piketon - - - - -	41	45
Wheelersburg - - - - -	42	50
Clay - - - - -	33	29
West - - - - -	38	36
Notre Dame - - - - -	40	51
Valley - - - - -	47	59



Baseball Team

(FRONT ROW, Left to Right) Pat Parlin, Vonald Patrick, Tom Mathis, Bob Morrow, Sam Fannin. (STANDING) Steve Skeens, Tony Moore, Barry Porter, Dean Lodwick, Stan Parlin, and Coach Don Groh.



M.V.P.'s

FOOTBALL
Mike Glenn

BASKETBALL
Bob Morrow

All S.O.C. Basketball

ALL S.O.C.
Bob Morrow

HONORABLE MENTION
John Clerico



All S.O.C. Football

ALL S.O.C.
Mike Glenn

HONORABLE MENTION
Bob Morrow, Andy Adkins, Terry Ross (not pictured)



Guidance Counselor

MR. JACK LUCAS



Custodians

Mr. Donald Thoroughman, Mr. Charles Clevenger, Mr. Jiggs Porter, Mr. Earl Hanna



Flashback of 1967-68 School Year

Ballgames

Dances

Assemblies

Homecoming '68

Exams

Concerts

Classes

Prom

Sn. Trip

Parties

Picnics

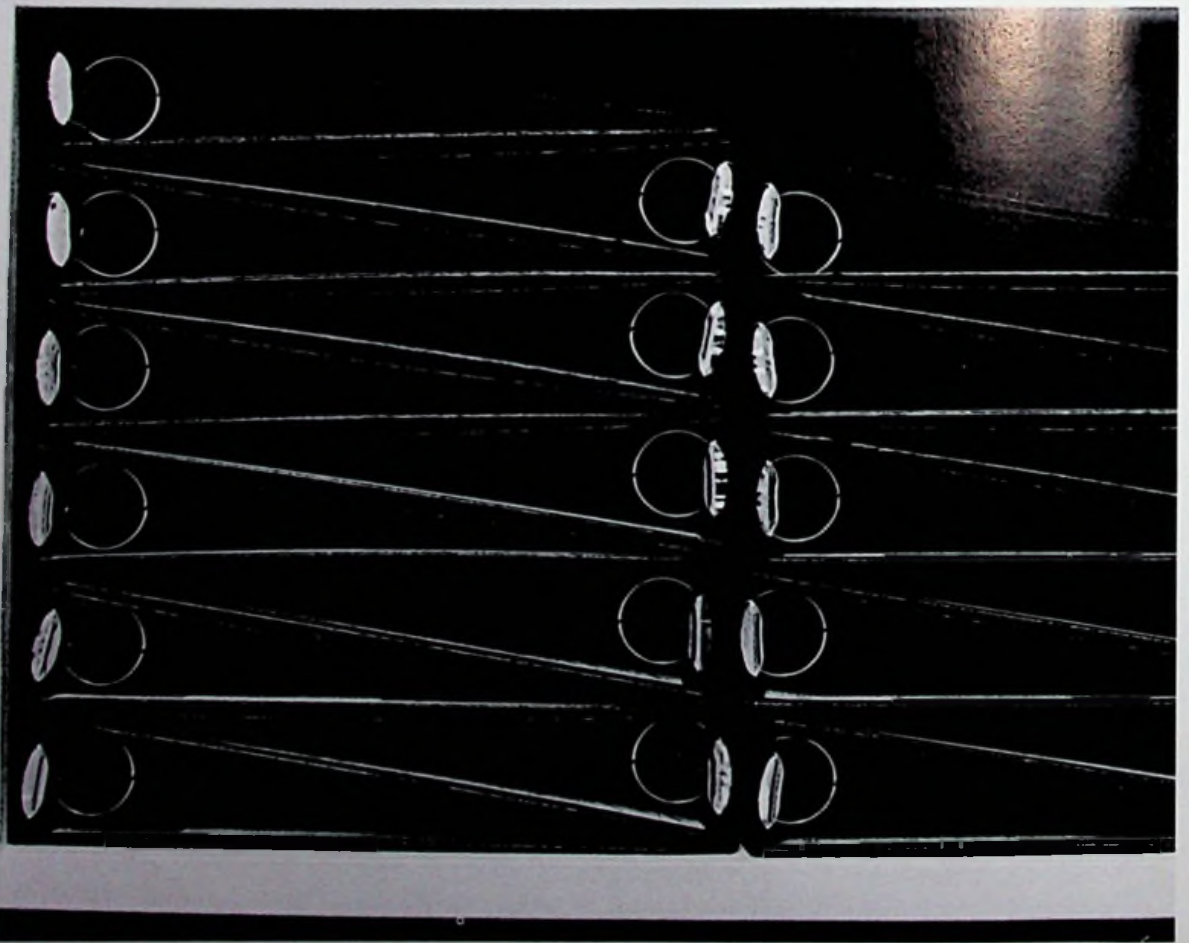
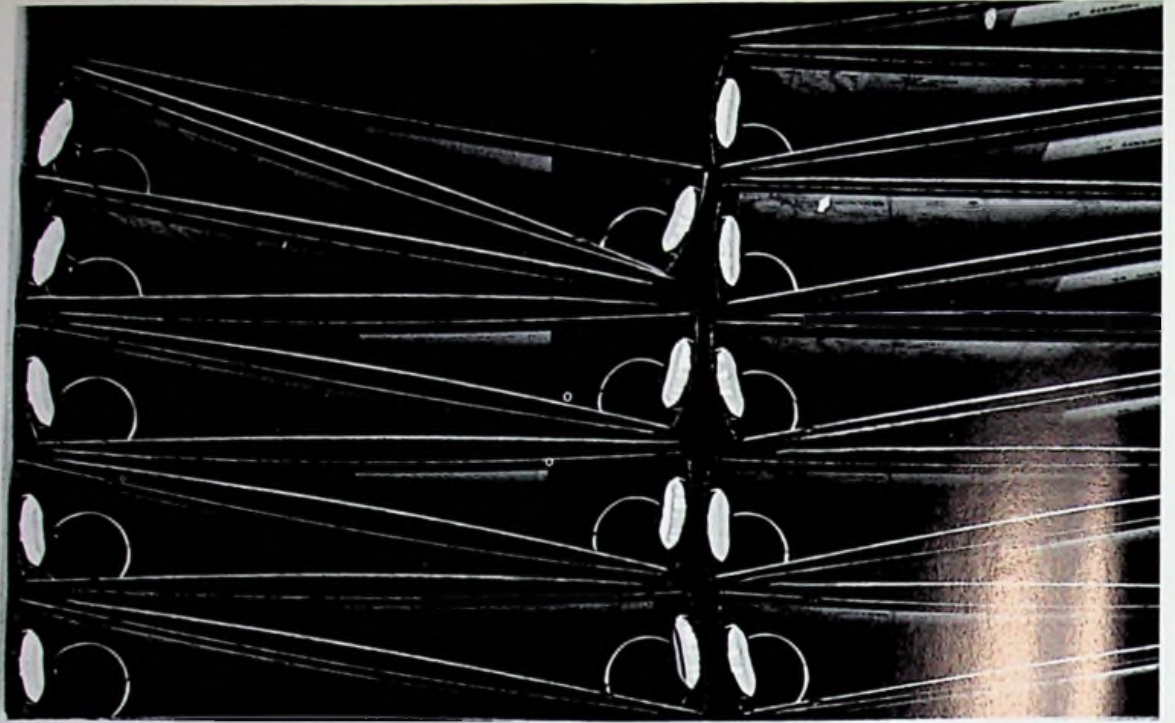
Class
Plays

Try-Outs

Graduation

Class Rings

Presently it's over,
but never forgotten.



ADVERTISERS



*Progress
Is A
"Two-Way
Street"*

THE GROWTH of any company depends, to a large degree, upon the community in which it is located and upon the attitude of the citizens of that community. For it is from that community and from those citizens that a company must gain strength, build its work force and develop its future. Thus, the more understanding the community is toward its industry and its problems, the more cooperative and loyal the citizens who comprise its work force, the better the company's chances for continued growth and expansion.

ON THE OTHER HAND, the growth of any community and the development of a bright future for its citizens depend equally as much upon the day-in-day-out successful, profitable operation of its industry. For from that industry stem jobs and paychecks today, employment opportunities for tomorrow, local purchases, community service contributions and vitally essential tax dollars.

OBVIOUSLY, THEN, the growth of a community and the growth of industries within that community are inseparably bound together, one dependent upon the other. And progress becomes a "two-way street".

LOOKING BACK, Detroit Steel is proud of the contributions it has made to the betterment of the Greater Portsmouth community and to the benefit of the citizens as it has pursued an unbroken 15-year course of growth and expansion . . . over \$150,000,000 invested to provide one of the most modern, competitive steel mills in the U. S. . . and an annual employee payroll that is currently running around \$24,000,000.

**DETROIT STEEL
CORPORATION**
PORTSMOUTH DIVISION



ZUEFLE JEWELERS

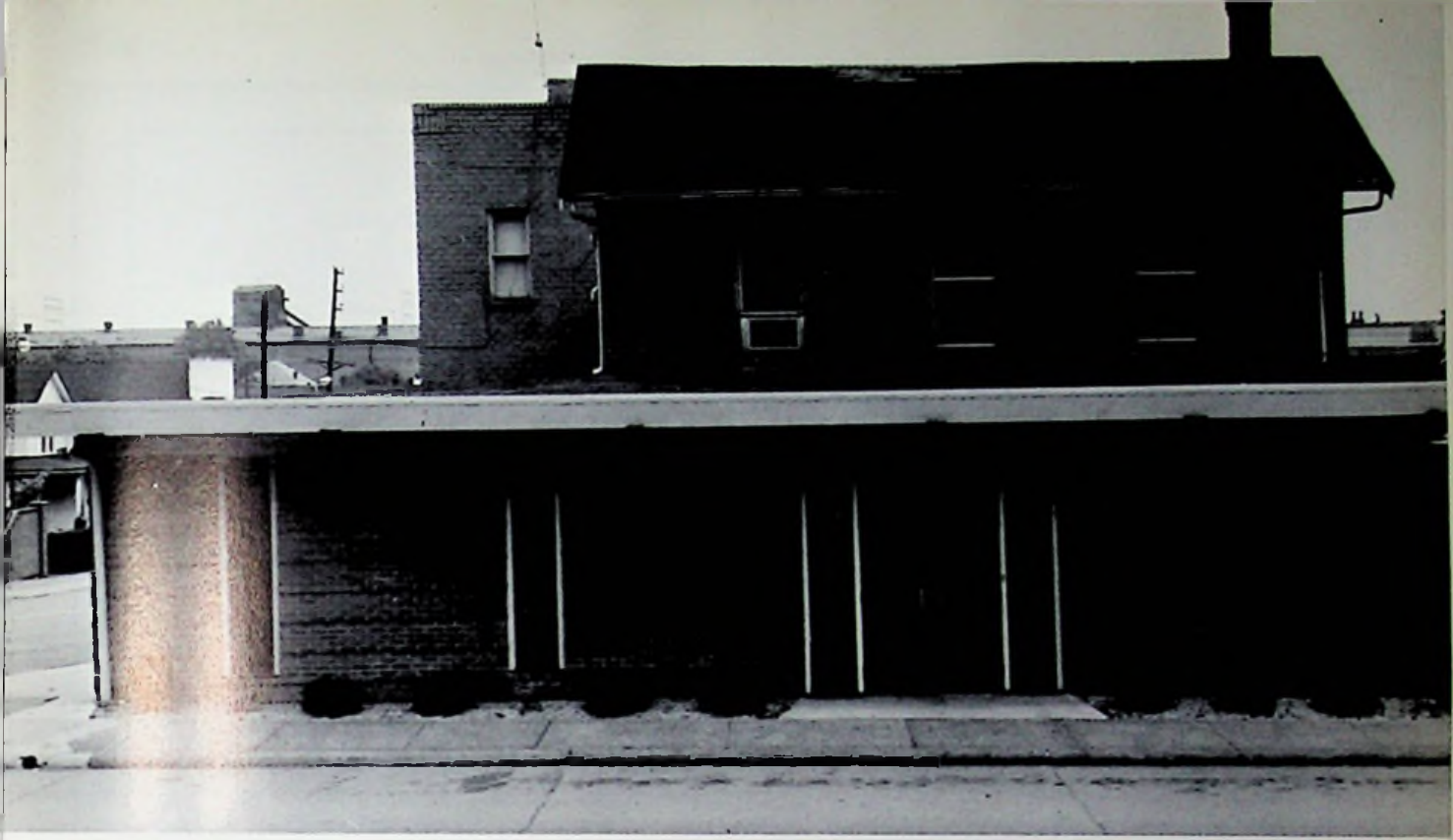
Portsmouth Oldest Jewelers

533 Second Street.

Phone 353-0450

Portsmouth, Ohio

Your Herf-Jones Representative



“GOOD LUCK TIGERS”



BOB'S PHOTOS

Wedding - Portraits - Special Occasions

Rt. # 3 Wheelersburg, Ohio

Ph. 776-2461

GILL FUNERAL HOME

THOMAS J. GILL - DONALD R. WOLFE - JESSIE A. GILL
Ambulance Service

442 Harding Avenue

Sciotoville, Ohio



NEWBERRY'S SPORTING GOODS

313 Chillicothe Street

Portsmouth, Ohio

HOWARD NEWBERRY, Owner

Phone EL 3-0644

Compliments of

NICK'S PLACE

3964 Gallia St.
New Boston, Ohio

"Best Wishes to the
Class of '68."

From

VERNAL G. RIFFE JR.

(Class of '43)

Compliments of

DR. KEITH GASPICH

("Best Wishes to the Class of 68")

Compliments of

TEXACO SERVICE STATION

521 Gallia St.
Sciotoville, Ohio

Owner - RAY BURKE

Compliments of

ECONOMY HEATING

"We aim to please!"

Nancy Rae



**U.S. Route 52
Wheelerburg, Ohio**



EMNETTS

IGA

4033 Rhodes Ave.
New Boston, Ohio

Compliments of

**MILLHUFF'S
DEPARTMENT STORE & GROCERY**

(We Now Sale Bobbie Brooks.)

**ALL KINDS OF
GLASS
FOR EVERY PURPOSE**

PORTSMOUTH GLASS CO.
515 SECOND ST. - PORTSMOUTH, OHIO

PAUL DUPLAIN

354-2190

J. W. STIR CO.

Floor and Wall Coverings

Ceilings

Ceramic Tile

516 Second Street
Portsmouth, Ohio

Compliments of

HIBBS HARDWARE

Portsmouth, Ohio

Compliments of

JARVIS JEWELERS

2901 Gallia Street
Portsmouth, Ohio

Keepsake Diamonds
Hamilton, Elgin, and Bulova
Watches

E. J. KENRICK CO.

Wholesale Distributor

119 Market Street
Portsmouth, Ohio
353-3165

Quality Plus Service
Gemperline
FURNITURE CO.

612-14-16 Second St.
Portsmouth, Ohio
Phone EL 3-2179

LOWE'S RESTAURANT

Sic'em Tigers

908 Gallia Street

Compliments of

DUVENDECK'S PAINT STORE

5619 Gallia Street 776-7335

Sciotoville, Ohio

"Best Wishes to the Class of '68"

RAY HOUCK FURNITURE COMPANY

5695 Gallia Street
Sciotoville, Ohio

Phone: 776-2237

Compliments of

BLUE BIRD BAKERY

(Specializing in WEDDING, ANNIVERSARY, AND BIRTHDAY
CAKES.)

Compliments of

**SUNSET LANES
RAINBOW LANES
&
CLASSIC LANES**

STAPLETON OFFICE SUPPLY COMPANY

607 Chillicothe Street

Portsmouth, Ohio

Office Supplies and Equipment
Smith-Corona and Royal Typewriters

Clary and Victor Business Machines
(Our 23rd Year)

1946

1968

MARTING'S

"One of Ohio's Good Stores"

Wishes the
Graduating
Class of 1968

- . HEALTH
- . HAPPINESS
- . SUCCESS

ADAMS BAKING CO.

Bakers of Pan Dandy Bread

1009 Offnere Street

Portsmouth, Ohio

WILLIAMS FURNITURE

QUALITY FURNITURE AT A
REASONABLE
PRICE

Gallia Street
Wheelersburg, Ohio

Phone 776-2542

OLLIE'S



featuring
**COLONEL SANDERS'
RECIPE**

Kentucky Fried Chicken
REG. U.S. PAT. OFF.

New Boston, Portsmouth,
Chillicothe and Circleville

456-5900

353-9151

INTER CITIES BUS LINES

Charter service anywhere in
Ohio

Half-hour service any place
in area.

1313 Findlay Street
Portsmouth, Ohio
Phone: 354-2040

ECHO CLEANERS

12th and Hutchins Street
Portsmouth, Ohio

NEW BOSTON POLICE DEPARTMENT

CHIEF * CAPTAIN *
Russell Imes Jack Foit

PATROLMEN:

Leroy Newman Roger Emmett
Keith Keplinger John Lytten
Harold Stamper Gary Spears
Harold Fraley Ron Lewis
Darrell Yeley Gary Stone

Compliments of

NEWMAN TIN SHOP & SUPPLY

434 Second Street
Portsmouth, Ohio

Compliments of

MEMORIAL BURIAL PARK

Wheelersburg, Ohio

"Get smart, go bowling"

Compliments of

CLASSIC LANES

P.O. Box 1252
Portsmouth, Ohio

Compliments of

COLEMAN GLASS COMPANY

(Headquarters for Auto Glass)

1548 Gallia Street
Portsmouth, Ohio

Compliments of

B. & R. TRUCKING COMPANY

(Reinhardt's)
7501 Wheelersburg, Ohio



School Supplies

CRICHTON OFFICE SUPPLY

740 Fifth Street
Portsmouth, Ohio 45662
Phone 353-8290

ART SUPPLIES



Compliments of

**PORTSMOUTH INTERSTATE
BUSINESS COLLEGE**

LEO BLACKBURN, President

Compliments
of

PRE-CAST CONCRETE CO.

2044 Eighth Street
Portsmouth, Ohio
Phone 353-6610

BRUSH ELECTRIC CO.

Heating - Air Cond. and
Electrical Contr.

10 Glover Street
Portsmouth, Ohio
PH. 353-1920

Compliments of

RICHARDS NEWS

Hallmark Card Center
1328 Gallia at Glover Street
Portsmouth, Ohio

JACK FISH & SONS INC.

2332 Gallia Street
Portsmouth, Ohio
353-1131

ANONYMOUS DONOR

Compliments
of

**DR. JACK D. WHITE
OPTOMETRIST**

WILLIAMS FURNITURE

"Quality Furniture at a Reasonable Price."

Gallia Street
Wheelersburg, Ohio
Phone - 776-2542

Compliments of

DEEMER'S SUPER MARKET

(Groceries - Meats - Produce)

404 Center Street
P.O. Box 322
Wheelersburg, Ohio

Compliments of

SHERMAN, RIFFE AND BENNETT INSURANCE

422 Center Street
New Boston, Ohio

Compliments of

GLADYS E. DAVIS

3903 Gallia Street
New Boston, Ohio

Compliments of

THE NEW BOSTON SHAKE SHOPPE

4511 Gallia Street
New Boston, Ohio

**TOM BARBOUR
INCORPORATED**

Auto Transmission
and Parts

"GO TIGERS"

923 Washington St.
Portsmouth, Ohio

PORTSMOUTH COCA-COLA

3001 Scioto Trail, Portsmouth
Phone - 353-3133

Best Wishes to the
Class of '68

Compliments of

H. LEET LUMBER COMP.

913 Washington St.
Ph. 353-4005
Portsmouth, Ohio

Compliments of

**BROWN'S BODY AND
PAINT SHOP**

Portsmouth, Ohio

SUDDEN DRY CLEANERS

"Best Dry Cleaning in
town."

2112 Harrisonville Ave.
Portsmouth, Ohio
Phone 456-4126

CAROLINA LUMBER CO.

1011 Lincoln Street
Portsmouth, Ohio

Everything to Build Anything!

FEROL'S BEAUTY SHOPPE

4022 Rhodes Avenue
New Boston, Ohio

For Appointments
Phone 456-4283

Compliments of

FAIRTRACE SHOES

NameBrand Shoes for Whole Family

Ninth and Waller St.
Portsmouth, Ohio

CECIL CAUDILL

ALUMINUM PRODUCTS CO.

Storm Windows, Doors, Awnings
Aluminum Siding, Railing
Post Column, Travel Trailers,
Truck Campers and Supplies

Business Phone 5737 Gallia St.
776-2151 Sciotoville, Ohio

DUNN COAL COMPANY

Wholesale and Retail Dealer
In High-Grade Coal

Yard and Office

Gallia and Broadway
Portsmouth, Ohio

**WARNOCK'S
DOLLAR STORE**

302 Chillicothe Street

Portsmouth, Ohio

Compliments of

BOB & FLOYD

401 Second Street

Portsmouth, Ohio

Compliments
of

**OHIO ASPHALT PAVING
DIVISION**

1115 Kendall Avenue

Phone 353-2101

LIVINGSTON & CO.

Scrap Iron - Copper - Brass
Used Auto Parts

K. EDWARD LIVINGSTON, Owner

2502-2560 Gallia Street

Portsmouth, Ohio

Compliments of

**PORTSMOUTH
MONUMENT CO.**

ED AND BOB ESTEPP, Owners

1609 Offnere Street
Portsmouth, Ohio

Phone 353-4055

Phone 353-6280

Phone 353-1873

LUTHER TRANSFER, INC.

Local and Nationwide

1910 Eleventh Street

**LUTE PUMP &
PLUMBING SUPPLY**

Phone 354-1790
519 - 2nd Street
Portsmouth, Ohio 45662

**WILLIS-TALLERICO
AGENCY**

Wheelersburg, Ohio
Phone 776-2791
PETER TALLERICO, Agent

Compliments of

JOHNSON'S POLY-CLEAN

1018 Harding Avenue
Sciotoville, Ohio

Compliments
of

DR. MOORHEAD

Phone: 776-2766
MRS. LARSON, Prop.
SCIOTO MOTEL

Old U. S. 52 East at Sciotoville
Air Conditioned
Wall to Wall Carpet
Free Cablevision
5709 Gallia Street
Portsmouth, Ohio

**WEST END
FURNITURE CO.**

518 Second Street
Portsmouth, Ohio
353-4165

Large Selection of
Lane Cedar Chests

Compliments of

**DEHNERS
DEPARTMENT STORE**

6113 Chillicothe St.
Portsmouth, Ohio



**PEPSI-COLA BOTTLING
COMPANY**

of Portsmouth
2415 Scioto Trail, P. O. Box 1428
Portsmouth, Ohio 45662
Telephone: (614) 353-3126

Compliments of
DISTEL FURNITURE CO.

616 Chillicothe Street
Portsmouth, Ohio
Phone 353-3810

SUMMERS & SONS

"Everything Musical"

319 Chillicothe Street
Portsmouth, Ohio

**AMERICAN SAVINGS
AND LOAN ASSOCIATION**

Incorporated 1892
503 Chillicothe Street
Portsmouth, Ohio

Compliments to the Class of '68



**KAY'S
JEWELRY**

811 Gallia Street Portsmouth, Ohio

**ROCKWELL'S
FLORAL SHOP**

"Say It With Flowers"
"Say It With Ours."
Wheelersburg, Ohio
Phone 776-2191

**POP'S DRIVE INN
RESTAURANT**

On Route 52
Wheelersburg, Ohio

**BIHL OFFICE EQUIPMENT
AND SUPPLY CO.**

920 Gallia Street
Portsmouth, Ohio

WOLFF

Better Clothes for Men and Boys
(Our 56th Year)
Portsmouth, Ohio

"Best of Luck Tigers"

Compliments of

BOB LINN

"Sporting Goods and
Other Equipment."

Compliments of

THE FIRESTONE STORE

Gallia Street and Glover
Portsmouth, Ohio

ANONYMOUS DONOR

Compliments of

PACK'S RENTAL EQUIPMENT

906 Fourteenth Street
Portsmouth, Ohio

Compliments of

JENKIN'S SOHIO STATION

5400 Gallia Street
Sciotoville, Ohio



The CRITERION

For Men and Young Men
Style and Quality

819 Gallia Street
Portsmouth, Ohio

Compliments of

OHIO VALLEY GAS COMPANY

PUBLIC DISCOUNT CENTER

Health Aids, Beauty Needs
Records, Sundry Items

ALL AT DISCOUNT PRICES

318 Chillicothe Street

THE FRANKLIN

Motel and Restaurant

Entertainment Nightly

Route 23 North

VANDERVORT'S

1532 Gallia Street
Portsmouth, Ohio

The Home Builder's

Shopping Center

Congratulations

From the

W. I. O. I.

GOOD GUYS

B. & B. LOAN CO.

837 Gallia Street
Portsmouth, Ohio

Diamonds
Luggage
Watches

ROBERTS JEWELERS

"The Diamond Store of
Portsmouth"

421 Chillicothe Street
Portsmouth, Ohio

"MORREY" WAINSTEIN
Manager

SCIOTO DRUG CO.

Phone 776-6066
224 Harding Avenue
Sciotoville, Ohio

GARY B. JOHNSON, Pharmacist

Compliments of

SCIOTO DAIRY BAR

5810 Harding Avenue
Sciotoville, Ohio
TOMMIE NESBITT
On Highway 335

**THE PORTSMOUTH
CEMENT & LIME CO.**

Third and Jefferson Streets
Dial 353-2320

KOCH HARDWARE

In the Heart of Wheelersburg, Ohio
GERALD T. TURNER Owner
"Where Hardware Gives
Hardwear"

Congratulations
to
Class 68

ATLAS FASHIONS

821-823 Gallia
Portsmouth, Ohio

ZIMMERMAN'S

Office Equipment - Supplies
Printing
Underwood Olivetti Agent
Since 1935
810 Chillicothe St.
Portsmouth, O.
353-4169

CUSTOM CARPET COMPANY

729 Sixth Street Phone 354-2893
Portsmouth, Ohio

Compliments of

**MORGAN BROTHERS
& WILHELM JEWELERS**

VERNON and VICTOR MORGAN
734 Fifth Street
Portsmouth, Ohio

Air Conditioned
Chapels

Air Conditioned
Chapels

**WARREN
FUNERAL HOME**

1104 Harrisonville Avenue
GL 6-4133

Oxygen Equipped Ambulance

Best Wishes From

THE BORDEN COMPANY

237 Second Street
Portsmouth, Ohio

Patron

GRACE KELSO

The Yearbook Staff
Advisor - Mr. Washington
Ad Solicitors

Connie Haney
John Clerico
Chuch Clevenger
Debbie Foit
Kathy Lewis
Nikki Fraley

D. Leadingham
Steve Patton
Peggy Yeley
Pam Williams
Judy Jennings
Bonnie Lodwick

Susan Newberry

The Silhouette Staff hopes you have enjoyed your 1968
Yearbook!

